

Snohomish County Marine Resources Advisory Committee (MRC)

Meeting Summary

Wednesday, October 21, 2009, 6:30 – 8:30 p.m.
Snohomish County East Administration Building
3000 Rockefeller Ave, Everett WA 98201
1st Floor, Public Hearing Room 2

<p><i>MRC Members Present</i> Jared Bond Mary Cunningham Brent Hackney Thomas Hoban Dawn Lawrence Lincoln Loehr Jerry Masters Mike McHugh Keeley O’Connell Dena Peel</p> <p><i>MRC Members Absent</i> Chrys Bertolotto, Excused Jen Sevigny, Excused</p>	<p>Staff, Presenters and Others Kathleen Herrmann, Snohomish County SWM Andrea Hennings, Snohomish County SWM, WCC IP Stef Frenzl, Snohomish County SWM Amy Johnson, Edmonds Community College Mike Tillotson, Citizen Kerry Marl, Pilchuck Audubon Jon Houghton, Edmonds Morgan Schneider, Puget Sound Partnership Caroline Gibson, Northwest Straits Commission</p>
<p style="text-align: center;">Summary of Decisions</p> <ul style="list-style-type: none">• The MRC meeting summary for July and September 2009 were approved following Jared Bond’s attendance correction to present and a typo on page 2 of the September minutes.• The Port Susan Marine Stewardship Area Resolution was approved pending any comments or changes due by Friday, October 30, 2009.	
<p style="text-align: center;">Upcoming Events</p> <p>MRC Conference</p> <ul style="list-style-type: none">• Nov 6-7, 2009 – NWSC Annual MRC Conference – Bellingham, WA <p>Kayak Point Regional Park Visioning Workshop</p> <ul style="list-style-type: none">• Nov 18, 2009- Kayak Point Golf Course, 6:30-8:30 pm, 15711 Marine Drive NE, Stanwood	

**Snohomish County Marine Resources Advisory Committee
Meeting Summary, Wednesday, October 21, 2009, 6:30 – 8:30 p.m.**

Welcome, Introductions, and Announcements

Lund's Gulch Basin

Jared Bond announced his attendance at a City of Lynnwood meeting, where a topic included Lund's Gulch Basin. The city is looking to create a 1-2 year plan to specifically meet the needs of the area.

Puget Sound Starts Here

Stef Frenzl announced the beginning of the "Puget Sound Starts Here" Campaign, which is a partnership between 57 local cities and counties (STORM- Stormwater Outreach for Regional Municipalities), Washington State Puget Sound Partnership, and Washington State Department of Ecology. This partnership was formed to highlight and improve water quality in Puget Sound and its surrounding lakes, rivers and streams.

EcoNet Bus Proposal

EcoNet is looking to develop bus ads that will run for over a year and will be funded by the Department of Ecology and Puget Sound Partnership, with each contributing \$500,000. Further funding will hopefully be provided by a GROSS grant.

Hedrick Smith Lecture

Kathleen announced the Hedrick Smith lecture on November 3, 2009 at the University of Washington (Kane Hall, Room 130 at 6:30 p.m.).

City of Mukilteo Mayor Debates

Jerry attended the City of Mukilteo mayor debate on September 22, 2009 at Kamiak High School, where he asked about potential beach access, as well funding sources to move the fencing.

Public Comment

Friends of the Edmonds Marsh

Jon Houghton noted the development of the "Friends of the Edmonds Marsh," a group which currently has meetings to promote the health of the 24 acre Edmonds Marsh. The marsh provides a unique resource and valuable habitat. The removal of a culvert could expand the area to restore an existing pocket estuary. The group has established goals and objectives, but would like to find partners and funds for a feasibility study, which he suggested may be a good MRC project. People for Puget Sound could also be a local partner for potential funding. Two creeks are present in the southern portion of the marsh area, which run under the railroad, parking lot, and marina through twin pipes that subsequently open off shore. Some adult Coho salmon have been able to find the culvert, although they are likely of hatchery stock. A new drainage project should be considered; significant backups have occurred in the past with the last backup occurring in 1996. These types of events could provide local community buy in for a project.

NWSC Conference and Reauthorization update

Caroline Gibson announced the upcoming Northwest Straits Commission Conference on November 6 & 7, 2009 and indicated that there was still time to register.

Reauthorization proceedings took place on October 22, 2009 in Washington, DC, with Ginny Broadhurst speaking before the Reauthorization committee. There were 12 pages of written testimony, including a letter from Snohomish County Executive Aaron Reardon, and 5 pages of spoken testimony. An update for the outcome of these proceedings will be heard soon.

MRC Administration Updates

Formal Introduction of Kathleen Herrmann and Andrea Hennings

New MRC Contact Info Sheets

New contact sheets were handed out. Dawn noted that Jared Bond and Dena Peel were the new co-vice chairs and the title should be removed from her name.

NWSC Grant Contract

The Northwest Straits Commission grant contract for \$305,000 for 2009-2011 has not been signed yet as the county was rearranging funding for the Marine Steward position. The NWSC has now given money specifically for administration, with the SWM money going toward projects. The contract will be finalized after a resolution from the Council in December 2009 once they sign the budget. This will not affect how the money is spent out of the grant and should be approved by our attorney this week.

MRC Reauthorization Amendment

An amendment was proposed to review the roles and responsibilities of the MRC, as well as remove the sunset clause. The Council's office was the proponent of the amendment, and Brian Goodnight and the Prosecuting Attorney's office will begin working on the changes this month.

MRC Bylaws

The MRC Bylaws will need to be renewed in January. Recommendations on amendments need to be coordinated over the next few months. Jerry, Jared, and Dena were recommended to assist Kathleen complete this task.

MRC Elections

It is time to begin thinking about officer positions for next year. Kathleen will work with existing officers to determine how to proceed. If you're interested in serving as an officer, please let Jerry or Kathleen know.

MRC meetings for November and December.

All MRC members are invited to a visioning workshop for the Kayak Point project on November 18th at Kayak Point Golf Course instead of a formal meeting. More details to follow. Stef suggested a holiday party instead of a meeting in December. Lincoln and Jerry suggested Mussel Watch sampling or a potential activity with the public.

Mussel Watch

The Puget Sound Partnership is considering contributing funding to help develop a volunteer-based effort to collect mussels for the Mussel Watch program statewide. Snohomish County and the MRC have been a leader in the program and are working with a project team to determine how we can help train other counties to continue the citizen science model throughout the state. This project is a collaboration with Puget Sound Partnership, Washington Department of Fish and Wildlife, WA Sea Grant, and NOAA.

NWSC Update

Tom Hoban attended the NWSC meeting in Friday Harbor. In the future, notes and links will be sent out to meeting participants. People for Puget Sound also send out a daily news update on local marine conservation issues.

David Dicks proposed a new regulation for vessels visiting Puget Sound to control invasive species. The Leque Island restoration project in Snohomish County was discussed. Stef added that the Snohomish County Council takes part in permitting for the project, so MRC input could be important, especially with pressure from the Agriculture Advisory Board. He also wondered if anyone would be interested in drafting a letter of support in case it is needed. Stef will send out information so the MRC can move on any decisions in the future.

NWSC Conference Preparations

Logistics for conference participants was discussed.

Puget Sound Partnership Update & Introduction of Morgan Schneider

Morgan Schneider, the Ecosystem Recovery Coordinator for the Whidbey Action Area, announced that she was looking for help to implement the action agenda. The Puget Sound Starts Here campaign and other activities are taking place, and she is hoping to begin conversations with other local groups to prioritize work.

Port Susan MSA

Mike McHugh submitted the Port Susan MSA draft to the MRC. Jerry asked whether anything that was discussed at the meeting would have to go through the county council, and if everyone was generally in favor, if the MRC could go ahead and approve the Port Susan MSA designation. It was noted that the resolution would need to come from the county's prosecuting attorney before the tribes would approve the designation, at which time it could go to the council. "Snohomish" and "Advisory" committee were to be added to "Snohomish County Marine Resources Advisory Committee," with additional comments and changes to be made by email before the draft is sent to the county attorney. Dawn motioned for the resolution's approval, which passed unanimously.

Kayak Point Update

Stef will still be the lead on this project for the next few months to continue momentum; duties will transfer to Kathleen at a later point. He discussed the background of the project, including the 2006-2007 storms, the resulting damage to the road, and how sea level rise would affect the park, road, and bulkhead in the future. The restoration design is currently at 30% and includes

options on road redesign.

The purpose of the workshop on November 18, 2009 is to obtain feedback from the public on their past and current use of the park. People for Puget Sound have secured a facilitator for the meeting, and they have obtained funding for outreach and canvassers to contact the local community and previous park users. This workshop is the first to two planned workshops to engage the public in their desired uses and vision for the park, with the second meeting taking place in the spring of 2010 to review design options. Completion of a 100% design is expected by June 2010.

Crabber Education Update

Brent Hackney gave an update on the progress of the new outreach materials for the crabber education program. These materials will include a 2-sided, weatherproof map with Port Susan on one side and Port Gardner on the other. Initial ideas for information on the map include shipping lanes, mooring buoy for barges, log booms, regatta dates, and contour lines of the bathymetry in feet. Snohomish County GIS will likely put the map together, and they will be placed in stores for distribution next to crab pot displays. Dan Hatch is willing to put up a display in his store.

Brent has also created a simple poster design for this year, which he will send out for approval. Distribution will take place at marinas on busy days along with escape cord cards. The feasibility of a website is being considered.

Mike commented that the Washington Department of Fish and Wildlife (WDFW) sport pamphlet is updated every October, and that the Tulalip tribe has proposed a better picture of a crab pot setup be included within the Dungeness crab regulations. As WDFW is responsible for updating pamphlets, it may be good for the MRC to formally comment on the crabbing portion, which should be directed to Rich Childers. Mike will email the Tulalip picture to the MRC.

Presentation: Puget Sound Processes 101- Lincoln Loehr

Lincoln recommended that he move his presentation to another date in the interest of time. Lincoln is currently examining a study conducted by Department of Ecology about rainfall and chemical loads from runoff from five area rivers, including the Stillaguamish and Snohomish Rivers. Sampling for the study took place in June and September, with a December sampling to take place. These dates mesh with the Mussel watch dates and stations, and the sampling tested for chemicals like PDBE's. Lincoln will send out an email with more information to Kathleen and Stef.

Jerry adjourned at 8:45.

Snohomish County Marine Resources Advisory Committee (MRC)

Meeting Summary

Wednesday, January 21, 2009, 6:30 – 8:30 p.m.
Snohomish County East Administration Building
Public Hearing Room, East
3000 Rockefeller Ave, Everett, WA 98201

MRC Members Present Jerry Masters, Chair Chrys Bertolotto Thomas Hoban Mary Cunningham Lincoln Loehr Jared Bond Dena Peel Daryl Williams	Staff, Presenters and Others Lily Wescott, Snohomish County SWM Michael Tillotson, Snohomish County SWM, WCC IP Claire Atkins-Davis, Stilly-Snohomish Fisheries Enhancement task Force Zach Shirk – Washington Conservation Corps Jessica Hayden-Spear, Landau Associates Peggy Foreman, ORCA Ardi Kveven, ORCA Julian Trujillo, ORCA Andrew Rash, ORCA Jon Slater, ORCA Amy Johnson, EdCC
MRC Members Absent Dawn Lawrence (excused)	

Summary of Decisions

- MRC Meeting summary for the November meeting was approved.
- Jerry Masters was elected MRC Chair, Dena Peel and Jared Bond were elected vice-chairs, Thomas Hoban was elected NWSC representative and Lincoln Loehr his alternate.

Upcoming Events

- Island County Beach Watchers Sound Waters, February 7th
- Coastal bluff homeowner workshop Saturday, February 28th in Everett
- Mussel Watch sampling on March 3rd, throughout Snohomish County
- Coastal bluff homeowner workshop Saturday, March 14th in Mukilteo

Snohomish County Marine Resources Advisory Committee (MRC)

January 21, 2009

Welcome, Introductions, and Approval of November Meeting Summary:

Jerry Masters called the meeting to order at 6:30pm. He asked for comments on the Secure Medicine Return bill. The committee agreed that the process is moving forward on schedule.

Chrys Bertolotto announced the 2009 Island County Beach watchers Sound Waters day. She described a funding request from WSU Regency in front of congress to make WSU extension a permanent program and that WSU has put forward funding request from the MRC.

Mary Cunningham motioned to approve the meeting minutes from November. They were approved.

Public Comment:

Zack Shirk announced WCC plantings for February and March. He distributed flyers for these volunteer plantings.

Discussion of Stef Frenzl's Promotion

Jerry Masters suggested that the committee reflect on the past and future of the MRC. He explained that Stef Frenzl has accepted a communications position with the county and the filling of his vacancy has not been approved. He says the committee has relied heavily on staff in the past. The projects discussed tonight involve MRC members carrying the ball. As of now the County will have some administrative duties but Stef will largely be gone in thirty days for NPDES requirements. Members will need to put up some time in the next few months if possible. Stef doesn't plan on letting things go backward with the MRC but the members have to recognize that they're going to have pick up the slack.

Lily Wescot followed saying that there will be interviews when hiring is approved and the county would like to have some MRC members involved, but it will be a significant time commitment. It's still unclear if county will announce job publicly or transfer from PDS.

Lincoln Loehr and Tom Hoban volunteered to help with the interview process.

Elections

Jerry Masters explained that the election nominations that make the most sense to him:

Chair: Jerry Masters

Vice Chair: Co-vice, Jared Bond, Dena Peel or Lincoln Loehr as possibilities

NWSC Representative: Tom Hoban

NWSC Alternate: Lincoln Loehr with staff person as third

He asked for comment.

Mary Cunningham asked if Lincoln would like to be in two positions, Vice-chair or co-chair and NWSC alternate?

Jerry Masters proposed to table elections until the end of the meeting in order to wait for Jared to arrive.

General Discussion

Tom Hoban asked Lily what staff will be available at the county during the interim.

Lily and Jerry explained that it's still a funded piece. There's Lily and Mike and Stef still will work as a staff contact, but he's got 30 days left before his supervisors will put pressure on him to do his new job full time.

Mary asked who will deal with getting our new member appointed etc. Jerry explained that Dave Ward and Lynda Ransley will be responsible. Recruitment is a problem, and filling the staff position has taken priority.

Jerry asked Ardi Kveven for to introduce the ORCA presentation.

ORCA Presentation:

Ardi Kveven explained that ORCA (Ocean Research College Academy) is an early college program at Everett Community College. Students are dual enrolled in their high school and the program and that its been five years since their last presentation to the MRC. Three students will share their State of Possession Sound Research: A three year old project for integrating general education projects.

The State of the sound was the model for the program. They wanted to use a place based research idea to use the budding skills of the students. Every Wednesday the three presenting students take the Hat Island ferry and do some basic sampling. These three have expanded upon the basic requirements and each did an independent research project.

Ardi introduced the three presenters: Andrew, John and Julian.

Three students of the ORCA program gave an overview of their program. They discussed their sampling procedures and some of their findings. The students have sought to improve the procedures to make their efforts more scientifically rigorous. The students have looked at the various data individually and in groups and tried to make connections between the various measurements through time and space. They look for trends and connections in the data. The program has a focus on developing citizen scientists. Each presenter has expanded the program in some way: sediment protocol, fecal coliform and harmful algae monitoring.

Jared Bond asked for clarification on the ultimate goal for the project. Ardi responded that the idea is to allow the students to make conclusions from the data, but also to allow others to use the data. There's the goal of making the data scientifically rigorous so it can be helpful to others.

Jerry Masters asked that the group come back to update the MRC more regularly and thanked them for coming.

Initial Project Proposals:

Jerry Masters announced that the group would discuss project proposals for the upcoming work plan. He explained the format for the process and the use of the color coded comment cards.

Lily Wescott explained that some of the projects were to be described by Stef and that he would send out updates.

Port Susan MSA- Mary Cunningham explained that a working group with many members has been discussing the possibility of a Port Susan marine stewardship area. Island County has been given approval to start working on its inception. The Northwest Straits Foundation has funded stakeholder interviews and created a report. Kit Rawson from Tulalip Tribe has applied for funding for a workshop using The Nature Conservancy formatted process. Meeting to be done with marine managers to identify indicators that would represent the ecosystem. The proposal right now is to begin TNC conservation action planning assuming funding. The project will take commitment of MRC staff time. Chrys Bertolotto and Dena Peel have expressed willingness to volunteer time. Year one hopefully would use money from Kit Rawson's proposal. Year two will involve completing the cap process to develop draft MSA plan. Previous NWSF for \$50,000 to help with the process.

Jerry let everyone know that the county funding changed. The MRC funding folded in to surface water and now funded through fees. It wasn't unanimous on the council, but what they agreed to is that the work the MRC does is important enough

Chrys Bertolotto expressed that the MRC still needs to get approval from the county council before July 1st 2009 to move forward with MSA.

Invasive Species Monitoring- Jared Bond proposed an invasive species monitoring project. It would start with a workshop to train volunteers on invasive identification followed by monthly finding missions. He suggested the use of kayaks and diving for above/below water identification and to get to some of the more difficult access areas. After identification track spread species.

Jerry Masters asked for Jared for an estimate of the cost of the project

Jared estimated \$65 a person for the workshop and \$5,000 or less for the year.

Chrys explained the work Nahkeeta has been doing and encouraged working with them.

The Community In Action Working Group- Chrys Bertolotto introduced the community in action group. Initially, the group would identify target audiences: the Port Susan bay shoreline community, recreational crabbers, beach users, scuba divers. The group would utilize parks for educational activities and get informational signs out at underserved areas at an estimated cost of \$15,000.

Other ideas for Community in Action

The group would encourage municipalities and community groups to propose to the MRC to support their work, and use public media to expand knowledge of Puget Sound Issues. In Port Susan it will offer coastal estuary community workshops focusing on behavior change costing \$4,000 each workshop. Continuing to fund the shore steward program and sustain the Sound Stewards program. A lot of people are now using more escape cords, so focus should change from escape cord to how to avoid losing one's pot maybe with danger level map. Develop an ecosystem certification for divers. Fund the WSU Beach Watcher core training. Volunteer assistance needed in the Snohomish delta restoration efforts. Identifying non environmental benefits of our efforts.

Meadowdale Restoration- Jared Bond explained that Stef Frenzl has recently met with the department of Parks and Recreation to discuss some issues at Meadowdale Park. The Lunds Gulch Creek is a big salmonid stream and recently steelhead have been found. Lynwood has the goal of annexing and expanding the park and has bought land around it. The major issue is development pressure and associated erosion. Big landslides have occurred. From the recreation standpoint the stream goes under the railroad tracks with access for park users. The park closed for six months the last time a slide blocked this passage in 2007-2008. Parks obviously wants to maintain access. City of Lynwood is considering appealing the decision to allow development in the unincorporated piece of the watershed. One of the ideas for preserving the area is to open a dialogue with the county to consider a moratorium on further development in the watershed until the County establishes a zoning district.

Jerry Masters asked how the park fits in to the MRC work plan.

Jared explained that the City is in support of researching the area for moratorium. The MRC could support a study of the watershed with the goal of making prudent recommendations. The city would be

willing to partner on any kind of study. In the short-term, the MRC could partner with Parks to look into options for improving public accesses the beach while benefiting salmon runs.

Mussel Watch- Mary Cunningham explained that she worked with Jen Sevigny and Alan Mearns and Amy Johnson's procedure's manual to create a proposal for the mussel watch program. She described the Snohomish County expansion of the NOAA program and the funding situations. For the next two years the Stillaguamish Tribe funding has been cut. NOAA may still cancel their program. Puget Sound Partnership or NWSC may be able to help funding to continue program. She proposed that the MRC encourage NOAA, PSP and NWSC to continue the program. And to reduce cost go back to doing every other year, summer and following winter.

Jerry Masters asked about the viability of the mussel populations being sampled. Mary explained that the situation is not clear.

She continued: It would be prudent to add some chemical testing including PDBEs which have now been banned. Lab protocols have not been made official. BPA, nonylphenols and pharmaceuticals are other possibilities. Potentially eliminate some chemicals, having some extra money to test after special events such as floods. Rough cost if the MRC paid for everything if NOAA dropped about 15000\$ for biannual monitoring without extra chemicals and special event money. Shipping and lab fees for 7 sites.

Chrys Bertolotto asked how much staff time would be required

Mary said that Alan Mearns will be needed for report writing and county staff for contracts, permits etc. and Mailing.

Marine Plastics- Mike Tillotson proposed that the MRC begin to consider marine debris in a context beyond derelict fishing gear. He explained the work of the Port Townsend Marine Science Center, the interest of the Stillaguamish Tribe and individual Beach Watchers. The project would not require significant investment by the MRC. He volunteered his own staff time to work on partnerships and further develop the scope of potential long term monitoring and a pilot project.

Marine Water Quality Investigations- Lincoln Loehr suggested the water quality project start homing in on emerging contaminants. Currently a contract has a consultant looking for different sources of data. What is the problem that they see? The project is to evaluate the risk to water quality using existing data and compare this to water quality standards. Mussel watch is included as a data source, as well as sediment data, effluent data (should be evaluated in the context of dilution) and bacteria data (in the context of human health risk). Determinations will be subject to change as new data becomes available. The data should be structured in a way that allows updating and revisions. Lincoln expressed interest in taking the load of the work.

Next Steps

Lily Wescott talked about the next steps for proposed projects: Stef will be meeting with NWSC to talk about the work plan idea. The scope of work will be developed in March. The chairs/staff/NWSC will score projects and propose them for the next grant period.

Elections Continued

Jerry Masters asked for NWSC representative nominations. Mary Cunningham nominated Tom Hoban as rep. and Lincoln Loehr as the alternate. Dena Peel seconded the motion.

Jerry asked for further discussion; there was none. Upon a vote the motion carried unanimously.

Jerry asked for chair nominations. Mary nominated Jerry Master. Dena Peel seconded the motion. Upon a vote the motion carried unanimously.

Jerry Masters nominated Jared Bond and Dena Peel for the position of vice-chair. Tom Hoban seconded the motion. Upon a vote the motion carried unanimously.

Final Remarks

Jerry said that the idea in the coming months will be for all members to pitch in and give the new staff person a lot of help. He then asked for additional comment.

Dena Peel announced that there is a free LID workshop at the Monroe county fairgrounds.

Mike Tillotson announced a Mussel Watch sampling on March 3rd.

Jared announced that City of Lynwood will be putting draft of surface water plan up for comment.

Jerry Masters closed the meeting at 8:36pm

**Snohomish County Marine Resources Advisory Committee (MRC)
Meeting Summary
Wednesday, February 18, 2009, 6:30 – 8:30 p.m.
Snohomish County East Administration Building
Public Hearing Room, East
3000 Rockefeller Ave, Everett, WA 98201**

<p>MRC Members Present Jerry Masters, Chair Chrys Bertolotto Mary Cunningham Lincoln Loehr Dena Peel Mike McHugh (Alternate for Daryl Williams)</p> <p>MRC Members Absent Dawn Lawrence (excused) Jen Sevigny (excused) Jared Bond (excused) Daryl Williams (alternate participation) Thomas Hoban (excused)</p>	<p>Staff, Presenters and Others Jon Houghton, Pentec Environmental/Port of Everett Amy Johnson, EdCC Heather McCartney, City of Mukilteo Lynda Ransley Tim Walls Craig Garric Melinda Gray</p>
--	---

Summary of Decisions

- MRC Meeting summary for the January 2009 meeting was approved.
- MRC approved proposal to amend the NWSC grant contract project Gravid Female Habitat Mapping to change sampling protocols to meet the intent of the grant deliverables. If alternative sampling protocols are not feasible to complete within grant timeline, MRC staff will attempt to amend NWSC Grant Contract to implement derelict fishing gear removal in partnership with the Stillaguamish Tribe.

Upcoming Events

- Sound Stewardship Training- People For Puget Sound- February 26, 28 and March 6 at Port of Everett Commissioners Room
- Coastal bluff homeowner workshop Saturday, February 28th in Everett
- Mussel Watch sampling on March 3rd, throughout Snohomish County
- Unintended Consequences: A History of Snohomish Shorelines- Thomas Murphy, PhD March 11th at 7:00pm at 2804 Grand Ave, Ste 300 in Everett
- Coastal bluff homeowner workshop Saturday, March 14th in Mukilteo
- Impacts on Environmental Health: Endocrine Disruptors- Jen Sevigny, April 8th at 7:00pm at 2804 Grand Ave, Ste 300 in Everett

Action Items

- MRC members review draft MPA inventory list prepared by MPA working group
- Staff notify Council Members to the endocrine disruptor presentation on March 6th, as several have expressed an interest in endocrine disruptors.

Snohomish County Marine Resources Advisory Committee (MRC) Meeting February 18, 2009

Welcome, Introductions, and Approval of November Meeting Summary

Jerry Masters called the meeting to order at 6:35pm. A quorum was not yet made, and postponed approval of the January 21, 2009 MRC meeting summary until the end of the meeting. Meeting summary was approved with a quorum at the end of the meeting.

Public Comment

Heather McCartney from the City of Mukilteo updated the MRC on her participation at the Marine Protected Area (MPA) Work Group was created by the legislature in 2008 and chaired by WDFW. Heather has been representing Snohomish MRC at the meetings. Heather has attended two meetings. The working group is comprised of state and local governments, WDFW, DNR, Parks, appropriate MRCs, appropriate federal agencies, and Puget Sound Partnership. Although the Working Group composition states that tribes are required to participate, currently tribal participation is lacking. Heather noted that this is a problem because the tribes have not sanctioned MPAs, and tribal participation should be a priority for the working group.

The working group is charged with: a) examining current inventory and management of Washington's MPAs; b) Develop recommendations to improve coordination and consistency among MPAs and MPA managers regarding goals for protected areas, criteria for protected area establishment, management practices, terminology, and monitoring practices; c) Developing recommendations to improve the integration of science into MPA establishment and management decision; d) Develop recommendations to further integrate local governments and non-governmental organizations into the establishment and management of MPAs; e) provide other recommendations to improve the effectiveness of MPAs in Washington. Recommendations must be provided to the legislature by December 1, 2009.

Heather distributed a packet to MRC members. Heather has identified a number of inconsistencies that the Snohomish MRC should be aware of:

- MPAs as defined by the working group requires that routine fishery closures or restrictions occur, however, the current draft of the inventory identifies and includes "protected areas" that do not have fishery closures or restrictions.
- Military exclusion areas are identified as MPAs, although these do not fit within the working group's definition of an MPA either.
- According to Ginny Broadhurst, Director of the Northwest Straits Commission and regional expert on MPAs, states that Washington Department of Natural Resources' (DNR) aquatic reserves are not necessarily protective; however, these are also included in the list of MPAs.

As a result, the Working Group's current approach inaccurately inflates the overall number of acres and percent of Puget Sound that is managed within MPAs. The current approach has significant implications for how the MPA working group develops recommendations to the legislature.

Heather recommends that the MRC weigh heavily on this issue to help shape the recommendations to the legislature to ensure that MPA definitions and inventories are consistent and accurate. Currently MPAs are being managed very differently, which also needs to be addressed by the working group. Heather feels the Snohomish MRC should play a strategic role in this effort to help us determine a good balance for our marine environment.

Working Group schedule:

February 20, 2009- draft inventory finalized and available for review. MRC members are strongly encouraged to help review the draft inventory.

August 31- report is due. If there is any way to put several of the MRCs together and have Ginny there and staff come up, it would be really important to have tribes sitting in on presentation.

WSU Extension Funding Status

Chrys Bertolotto announced that WSU budget proposal has come out to legislature. Chrys said that the worst case scenario proposes a 75% cut to all public services, which is virtually all extension offices and service centers. This is unprecedented. The WSU Board of Regents has proposed this action. If the worst case scenario happens, it's a good chance that extension offices would close. All programs at risk even if grant funding. Staff is working to educate the community to let people know what's at stake.

WSU BWs have developed 2 lectures in Sound Holistic Health Center at the SnoIsle Coop.

- Unintended Consequences: A History of Snohomish Shorelines- Thomas Murphy, PhD, March 11th at 7:00pm at 2804 Grand Ave, Ste 300 in Everett
- Impacts on Environmental Health: Endocrine Disruptors- Jen Sevigny, April 8th at 7:00pm at 2804 Grand Ave, Ste 300 in Everett

Heather McCartney requested that Staff notify Council Member Koster, as he expressed an interest in Endocrine Disruptors.

Snohomish Estuary and Smith Island Estuarine Restoration Project

Tim Walls and Craig Garric, Snohomish County Public Works- Surface Water Management staff, presented their estuary restoration project to the MRC.

Background: The Snohomish River estuary is important for ecosystem needs, including salmonids.

Since the 1860s, over 44 miles of dikes have been installed. Additionally, about 23,000 pieces of large woody debris were removed. Only 15% of the marsh remains open.

Recovery Hypothesis: Rearing habitat is limiting. Estuary restoration will improve population performance in the short-term and is critical to long term salmonid pop health.

Approach: Restore the natural processes that influence the health of the watershed.

Project Description & Goals: The ten year target for the Snohomish Basin Salmon Recovery Plan is to restore 1,237 acres in estuary. Many partners are involved in this comprehensive effort. Smith Island is one of these projects, and encompasses 360 acres of tidal marsh, roughly a ¼ to what the recovery plan needs in order to accomplish its 10 year target.

The entire site is designated Ag-10. Snohomish County owns the majority of the proposed project site. Two properties on the island are still operating- together comprising 70 acres, which would need to be acquired prior to project implementation. Also, Williams Northwest Pipeline is prepared to donate the remainder on the island.

At the site, a dike runs along east side of site. The project's intention is to relocate 1000's of feet of dike westward and allow for tidal intrusion in 360 acres. Project managers propose to set back the dike to protect existing infrastructure, and plan to build new dikes to ACOE standards. New dikes will be low, and will work to have edge habitat and not just a steep dike. The project will include removing tide gates, recruit wood and sediments, naturally suppress weeds at low areas, and high dikes take more active weeding.

Other opportunities include improving public access, flood protection for infrastructure/ storage, walking boat launch, regional partnerships and collaboration, mitigation. Project partners are also working on a joint monitoring plan.

Project Status: Project partners are finalizing the dike alignment location, and have a few property ownership uncertainties that must be settled before a final design is chosen. There are three proposed project restoration design alternatives. Currently the County is pursuing last-remaining acquisitions that must occur if the project will be implemented, in addition to fundraising and partnership-building, final design and obtaining permits. The project's SEPA checklist is coming in April.

There are arising issues and concerns that have been brought forth by the agricultural community. The county needs a broad cross section to get public input. The county is seeking MRC's input.

Jerry Masters requested that MRC staff write the letter to advise the County and have MRC review and approve at the next meeting. Jerry recommended that the letter be sent to Executive Staff and to Council Member Cooper, and to invite public officials to attend the meeting in March. Mary Cunningham noted that the MRC should recommend the maximum restoration option.

Presentations to NWSC on Friday April 24, 2009

NWSC annually asks the MRCs to give a PowerPoint presentation on 2 projects in our work plans at the April NWSC meeting at Padilla Bay in Skagit County. Last two years staff presented on Mussel Watch and Kayak Point. This year, staff will be unable to present. It is likely that the new Lead Staff will not be able to present at this meeting, as the position may not be filled. Stef requested that a few MRC members step forward and commit to giving a presentation on projects. NWSC has requested that our MRC doesn't present on Mussel Watch or Kayak Point.

The following possible presentation ideas were identified:

- Port Susan MSA (Mary, Chrys and Dena)
- Water Quality Data Compilation & Assessment (Lincoln)
- Invasive Species Monitoring (Jared)
- Crabber Education

Staff asked for any interested presenters to contact him.

Gravid Crab Habitat Mapping Project Status: Proposal for NWSC Grant Funds

This project unexpectedly ran into significant road-blocks and will not be completed. Due to poor visibility conditions in Port Gardner and Port Susan due to the floods, our consultant was unable to begin the surveys. They attempted numerous times, and visibility was too poor to obtain high quality data. By the time visibility improved, surveyors found a significant number of empty holes in the substrate, presumable where gravid females once remained.

As a result, MRC staff is recommending that the MRC postpone this project until 2010, and request for additional funds from our upcoming NWSC Grant to pay for the project. MRC staff has already begun the process for extending our contract with our consultant, NRC, with contract language that the project is dependent on available funding, which gives the MRC the opportunity to re-think the project.

The grant that funded the project expires on June 30, 2009, and the MRC cannot extend the grant. As a result, it is possible that the MRC lose approximately \$40,000 in unspent grant funds. Staff is working to determine if the County can amend our grant contract with Ecology/NWSC to enable the MRC to use the funds to remove derelict fishing gear in Port Gardner and Port Susan prior to June 30. If we are able to amend the contract, Snohomish County would enter into an intergovernmental agreement with the Stillaguamish Tribe to have them coordinate derelict gear removal. This is our only option for spending the funds, as staff has already exceeded our available staff time on this project.

Staff requested direction from the MRC on how to proceed. Staff recommended an approval to attempt to amend the County's contract with Ecology, transferring funds from the Gravid Female project to DG removal in the amount of approximately \$42,000. If this is unsuccessful, funds will go back to NWSC and will be spent by NWSC for a project of their discretion next year. Staff was informed that the Northwest Straits Initiative won't lose the funds altogether.

Chrys identified a need for educational signage at parks to get info out at more sites at Meadowdale, picnic point, more materials, activities, etc. Chrys would be able to help. Staff replied that due to lack of staff time at NWSC and Snohomish County, an amendment must be clear and transfer all funds to another project. As a result, this is not an ideal situation.

Mike McHugh suggested to amend the contract to obtain presence/absence data crab at 70 sites, including data on size and frequency of male and female (not gravid) crab. The project could identify areas of high use of female crab with an understanding that crabs don't move much, and then perform a spatial analysis to figure out where females are most likely to concentrate. Mike would take existing data from Tulalip and "create" the data to scatter plot to get weighted use plots of crabs to get point data with different values. The study could use modified gear to close escape rings to selectively fish and collect data at a certain point that's very usable. Mike would want to get data and use data from Alaska to figure out a program. He would dry-lab the program and get seasonal crab use. This approach blends existing data that allows simple computer modeling. May 12th is traditional time that males and females buddy up. So, you don't catch crab by May 12th. This wouldn't be much of a change of MRC goal to shift study plan, and would remove potential for failure next year. This project would also tie into the MPA issue. If we can find a study that says "we want these areas protected for crab," this data would be a significant contribution toward resource protection.

Mary Cunningham motioned to direct Mike McHugh, Staff, Tulalip Tribes staff, NRC, WDFW and NWSC to develop an amended Scope of Work for NRC. Staff will work with Mike McHugh and partners to articulate goals, costs, etc and find out what is feasible in our timeline. The county would attempt to amend the contract with our consultant, NHC, to have them perform the work. If the project is deemed not to be feasible for whatever reason, then staff will work to partner with the Stillaguamish Tribe to remove derelict fishing gear.

Motion was seconded by Lincoln Loehr. Consensus was achieved.

Additional Project Proposals

RR Landslide Sidecasting Permit & Research

This project idea has three components both geared toward on-the-ground action to improve nearshore habitat processes in Snohomish County and Puget Sound wide, and would be coordinated by Arden

Thomas, SWM's Habitat Specialist, Arden Thomas. Arden is pursuing Salmon Recovery Funds to fund the majority of this project.

The overall project has three components, and we're asking the MRC to help begin funding the first component:

- 1) Develop a sediment budget and sediment placement strategy for the armored portion of southern Snohomish County. The project would include current and historic conditions mapping, sediment budgeting, and develop a strategy that identifies prioritized sites for placing sediment along the nearshore. We're still working on total project cost, but it's possible that the project could be up to \$350,000. MRC Staff is requesting MRC support in the amount of \$20,000 to spearhead the sediment budget and placement strategy and show funders that this project is highly necessary and supported by the MRC. Funds would contribute to Arden's time to develop a project work plan, obtain additional funds for the project, and coordinate the research project.
- 2) Conduct a landslide debris study to assess the beneficial effects of reintroducing landslide material in the nearshore environment of Puget Sound along railroad tracks. Sound Transit proposed such a study as part its proposed compensatory mitigation for nearshore impacts resulting from the Everett to Seattle Commuter Rail Project, but chose not to continue to the project once mitigation was no longer necessary. I have a copy of their proposal if anyone's interested. The study would include choosing a study site to place landslide sediment and debris and monitor how the shoreline responds, including WQ, sediment movement, impacts to biotic community/eelgrass, etc. This information is important because there isn't any data to show the impacts of placing material along the shoreline, and it will be essential to have this information to support the third component of the project. This study would not be funded using MRC funds at this time.
- 3) Facilitate the approval and streamlining of permitting BNSF and Sound Transit to sidecast landslide debris along the RR and place along the beach instead of hauling to a landfill. Currently there are a few snags in the permitting process that need to be worked out in order to allow for BNSF and ST to place sediment in Puget Sound after a landslide. These snags include water quality considerations, and ESA issues. At this point we're not ready to begin this component, but wanted you to know that this is the ultimate vision for the other project components.

This project is in alignment with our strategic plan: Marine Ecosystem Health Objective 1, Strategies 1, 2 and 3. Stef commented that he believes this project has the most potential of all MRC projects to have a significant impact on our marine shoreline locally and across Puget Sound.

Jon Houghton is hosting a site visit at the Mount Baker Terminal restoration site on March 2, 2009 at 2:00, and invited interested MRC members. MRC members should contact Jon if interested.

Kayak Point

Stef had no new news on this project. Staff has been unable to coordinate a site visit with Parks, and is attempting to reschedule for mid-March. Staff recommended waiting until the next MRC meeting prior to determining how to proceed. As a result, Staff recommended not voting on Kayak Point during the voting exercise later in the meeting.

Meadowdale Park RR Project

Stef wanted to clarify this project's scope, as he wasn't in attendance at the January meeting. Funding for the Meadowdale Project would be exploratory in nature. It would provide initial funding to perform background research, identification of site needs and potential solutions to the site's landslide and

railroad culvert concerns. This is similar in nature to how the Kayak Point project funding started. It is feasible that this work be performed by MRC members with little staff participation.

Snohomish Estuary Monitoring

This project would include funding for our Washington Conservation Corps Individual Placement's (WCC IP) time to coordinate with the Nearshore Cooperative and Snohomish Basin Salmon Recovery Team to assist with estuary monitoring by initiating a citizen science component of the estuary monitoring program.

Chrys Bertolotto noted that funding only \$5,000 for this type of project seemed inadequate, and questioned the idea of having a WCC IP lead the effort every year because these types of programs are more successful with continuity in volunteer leadership.

Initial Project Ranking Dot Exercise

Staff explained the matrix (see attachment) and stressed the need for more work on each of these projects. Stef asked the MRC to assume that each project budget is currently underestimated, and each project needs to include thoughtful outreach/education, evaluation, partnership building, etc. Total annual project budget for the MRC is anticipated at approximately \$100,000. Currently, all identified project budgets add up to approximately \$160,000/year, resulting in a need to prioritize projects and eliminate those that are not deemed high priority.

MRC members then voted using the dot exercise (see chart attached below). MRC members were each given 5 dots to vote on first-tier priority projects and 2 dots for second-tier priority projects.

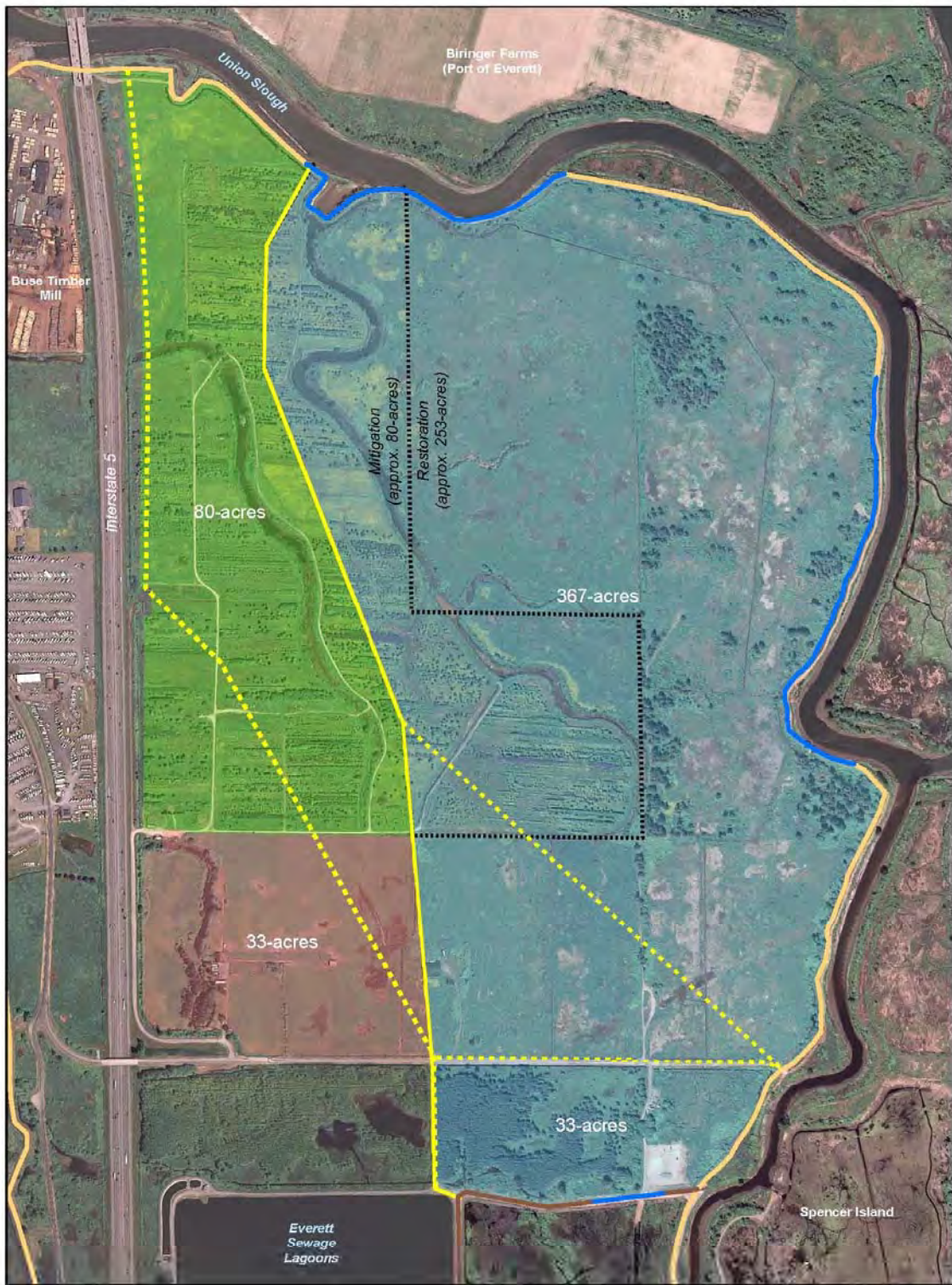
Project Proposal Discussion & Next Steps

Projects have been prioritized based on the number of votes in the chart below.

MRC members commented that these priority projects should take into consideration that not all MRC members were present to vote. Staff noted this concern, and stated that the exercise was only to help staff and project leads understand where projects are likely to fall in priority for funding prior to developing a draft proposed work plan. Additionally, staff had requested that MRC members choose not to vote on the gravid female habitat mapping project nor the Kayak Point restoration project at this time.

Stef said that he plans to be in communication with each project lead to assist them while we develop project narratives in the coming weeks.

Jerry Masters closed the meeting at 9:00pm.



Smith Island Estuary Restoration Project
Ag-Mitigation-Restoration Conceptual Plan

Legend

- Setback Dike
- - - Setback Dike Alternatives
- Proposed Dike Breaches
- Agriculture
- Restoration-Mitigation
- County-Everett Swap

0 250 500 1,000
 Feet
 1 inch equals 552 feet

Snohomish County
PUBLIC WORKS
SURFACE WATER MANAGEMENT
 (425) 388-3464

Snohomish County disclaims any warranty of merchantability or warranty of fitness of this map for any particular purpose, other express or implied. No representation or warranty is made concerning the accuracy, currency, completeness or quality of data depicted on this map. Any user of this map assumes all responsibility for use thereof, and further agrees to hold Snohomish County harmless from and against any damage, loss, or liability arising from any use of this map.

**Snohomish County Marine Resources Advisory Committee (MRC)
Meeting Summary
Wednesday, March 18, 2009, 6:30 – 8:30 p.m.
Snohomish County East Administration Building
Public Hearing Room, East
3000 Rockefeller Ave, Everett, WA 98201**

<p>MRC Members Present Jerry Masters, Chair Chrys Bertolotto Mary Cunningham Lincoln Loehr Dena Peel Mike McHugh (Alternate for Daryl Williams) Dawn Lawrence Jared Bond Thomas Hoban</p> <p>MRC Members Absent Jen Sevigny (excused) (excused) Daryl Williams (alternate participation)</p>	<p>Staff, Presenters and Others Arden Thomas – Surface Water Management Brent Hackney – MRC nominee Jon Houghton – Pentec Environmental Chris Betchley – WSU Beach Watcher</p>
--	---

<p>Summary of Decisions</p> <ul style="list-style-type: none"> • MRC Meeting summary for the February 2009 meeting was approved. • Amended budget for NWSC grant application and prioritized cuts were approved.
<p>Upcoming Events</p> <ul style="list-style-type: none"> • Impacts on Environmental Health: Endocrine Disruptors- Jen Sevigny, April 8th at 7:00pm at 2804 Grand Ave, Ste 300 in Everett

**Snohomish County Marine Resources Advisory Committee (MRC) Meeting
March 18, 2009**

Welcome, Introductions, and Approval of February Meeting Summary

Jerry Masters called the meeting to order at 6:35pm. Mary Cunningham motioned to approve the meeting summary from February 18th, 2009. Dena Peel seconded the motion and it was approved. All present introduced themselves, including Brett Hackney, a nominee for a vacant position on the MRC.

Public Comment

Chrys Bertolotto announced the Storming the Sound conference on environmental education; Friday, April 3rd 9-4 at Chief Sealth High School, Seattle. She also announced the next beach watcher presentation; Jen Sevigny's talk on endocrine disruptors, April 8th at 7:00pm at 2804 Grand Ave, Ste 300 in Everett. Additionally, Beach watchers have developed a program to go out to schools and meet middle school students to talk about marine ecology. Beach Watcher training starts on Tuesday, she thanked the MRC for their contribution to the program.

Thomas Hoban commented that the recent Shore Stewards bluff workshops had over 100 in attendance.

Mike Tillotson announced that he would be staffing a booth at People For Puget Sound's earth day event at Union Slough, April 18th from 10:00am-2:00pm.

Stef Frenzl gave an update on Surface Water Management funding:

- An approximately 4 million dollar deficit
- Real Estate Excise Tax (REET) is not coming in, the department is looking to shuffle things and put capital projects on hold so as to not lose staff
- The Stewardship Program is taking 30% cut
- MRC Staff has been told to proceed as if the budget will stay the same
- Filling the vacant steward position has seen no progress and Stef will likely be at April and May MRC meetings.

Stef announced the call for ecosystem project ideas from NWSF which would receive regional funding outside the MRC budget.

Mary Cunningham asked if the Port Susan Bay MSA or working with the BNSF railroad could be possibilities.

Stef said that both would be possible if the MRC submits an application. BNSF is one of the projects the MRC will be presenting to NWSC in April. Arden and Dena will be presenting.

Jared Bond gave an update on the status of a proposed 71 unit housing development upstream of Meadowdale Park. Justice Barbara Dykes ruled on the City's appeal of a county decision. The decision was favorable for natural resources conservation and the City of Lynnwood, finding that the PDS position to allow development is at odds with county code and state law.

Smith Island Support Letter

Stef presented a draft letter supporting the full restoration of Smith Island. He asked for comments on the language.

Mary commented that we should leave the word "very" in the first line of the fourth paragraph.

John Houghton commented that he thought 41 endangered species is high. Jerry Masters wanted to make sure that we appropriately reference the number that is used. John reviewed during the meeting and clarified that there are 11 marine and anadromous species federally listed.

Arden Thomas suggested that it would be possible to clarify with the steelhead listing and then separately reference Pacific Smelt.

Jerry clarified that he thought we should avoid that discussion of development and agriculture, focus most on marine benefits. He asked for other comments and to produce a final draft.

Lincoln Loeher inquired about the “full restoration” language with regard to the Everett sewage plant. Mary and Stef clarified that the letter is referring to SEPA option A, not restoring the entire island.

Mary moved to accept with amended changes, Lincoln seconded and all approved. MRC staff will coordinate to finish the letter and send to Jerry for signature.

Project Proposal Discussion & Next Step

Stef thanked everyone for helping to put the proposals together for the NWSC grant. He distributed the budget worksheets and described the proposed projects:

Initial Proposal

1. Continuing with the gravid female project as it was in the last grant. Work with NRC with diver protocols to identify gravid females in the substrate. There is a need to know because they generally don't move once buried and use the sites repeatedly and WDFW gets information to inform their deep water permitting. Only 1,000 in staff time because the proposal is ready to go.
2. Crabber education. The new goal is to reduce the likelihood of losing pots. Chrys Bertolotto's time is used under consultant services and the program is run mostly under WSU. Stef explained that he's taken some of the numbers and allowed for revision of the materials that we produce in the first year.

Chrys explained that it's in the first year because the crabbing season is out of sync with the grant schedule, can't bill any money until July 1, 2009. This project would start in 2010 harvest season.

3. Sediment study. No money is slated for this project in the first year, but in the second year could leverage SRFB funds. It would look in to the feasibility of using landslide and other sediment sources to nourish beaches along the BNSF railway.

Arden Thomas added that her grant funding could allow her some time to work on the project.

Stef expressed belief in the ability of this project to change the way in which we look at the shorelines. The railroad is onboard and in fact was the first to propose the idea. This would continue on their work.

John Houghton asked if we just approached BNSF could we move forward with a lack of funding. He expressed critical need for sediment on certain places between Everett and Edmonds. Expressed willingness to go talk with BNSF with Stef and Arden Thomas.

Lincoln said he has a copy of the study that the railroad conducted in the 1960s to look at this same idea. He continued that, there's a sediment evaluation framework being developed by multi-agency

agreement approaching the final stage. They're getting close to concluding that for open water disposal, sediments with any human inputs could be prohibited. It could create a regulatory barrier.

Arden replied that this points to the importance of the stakeholder process to clarify regulatory roadblocks, then work with PSP to try and implement legislation that would work for this in the future. This seems generally supported by the agencies, but some nuances to be worked around.

4. Shore stewards. A program that aims to engage people who live along the shoreline in order to implement BMPs. It's a strong program that accomplishes a lot with little money. Assessment work is looking in to how to be more effective. It also includes monthly newsletter. A strong program interlinked with Extension and BW.

Tom expressed strong support for the Shore Stewards program, saying that it gets real, on the ground work done.

5. Port Susan Bay Marine Stewardship Area. First year funds would be to help Kit Rawson with planning a science workshop and conservation action plan, second year funds would be more focused on implementation.

Mary suggested that with increased MRC member volunteer time the costs could be cut.

Chrys explained that the goal is to get away from the meetings and go to on the ground. Use MSA title to attract stewardship resources.

Stef clarified that the end product would be a plan to help us move forward with collaboration for managers, outreach/education. The end point of this funding is not action, it's a document and a plan to help us move towards strategic action.

6. Mussel Watch. Mary has an expanded proposal to add two sites and add PBDEs to the contaminant list. NOAA has been testing, but the MRC has not. NOAA found lots of PBDEs at Edmonds, which spurred interest. Also proposed to include a couple unusual events such as flooding and oil spills at one site, probably at Everett.
7. Beach Watchers program. Started in 2005. Volunteers get 100 hours of intensive training and are required to give 100 hours of volunteer service. The program itself has been very important with capacity for implementing MRC projects. Many of these projects couldn't happen without Beach Watchers.

Jerry clarified that funding for beach watchers comes from multiple sources, but the MRC's contribution is an important source. Stef, confirmed that the MRC's funding supports the core training to get more people trained and ready to volunteer.

Revised Budget Option 1.

Page three of the spreadsheets offers an initial revised proposal. A large portion of the money is for administrative tasks, around \$80,000 to cover Stef and Lilly Wescott's time.

Chrys asked if this revision included all the strategic plan proposals.

Stef explained that it includes some of it. To fully implement 400 more hours 8,000 has been requested for a WCC IP. Because of uncertainties within the department of ecology this portion of the work cannot be guaranteed.

Chrys suggested that beach watchers could pick up on some of the planning of infrequent volunteer events such as mussel watch.

Stef continued: there are two options that get us to \$120,000. The next step is to prioritize where to cut if the MRC doesn't get the full \$120,000 from NWSC. The total will likely be between \$100K-\$120K. The \$120,000 proposal must be submitted to the executive by Friday. The goal of the meeting is to approve a \$120,000 budget and prioritize projects to \$100,000 if cuts are necessary.

Stef presented *Option 1, year one*:

- Gravid crab study would be reduced.
- Sediment study: First year, no MRC funds will be required, but Arden would start with non-MRC money.
- For the Shore Stewards Program the recommendation is to remove the workshops. It's based on the SWM research on behavior change over a decade. The idea is that the more engagement you have one on one the better chance of behavior change. It is unclear whether or not the workshops do more than the Shore Stewards alone.
- Sizeable cut on Port Susan to \$5000 to help Kit with the Workshops and to get some more outside funding.
- Money saved from other cuts would go toward adding Kayak Point work to the application.

The committee expressed support for the Shore Stewards workshops.

With regards to Kayak Point, Jerry asked what the status of the \$160,000 grant that the MRC has already obtained.

Stef explained that a significant portion of the funds will be unspent due to delays with the Parks department. Initially the money was going to pay for outreach and education, 100% design and permitting and monitoring. It is unlikely that more than one quarter of the outreach and education money will be spent. It's also unlikely that 100% design will be reached with this grant. The money in the budget would allow us to finish the design and look for more money.

Mary suggested if we took \$8,000 out of the second year of the Port Susan MSA and gave it to Shore Stewards workshops we could still go out for grants to try and get that finished. While we need to give the MSA enough money to where it shows the MRC commitment the workshops are very valuable.

Stef presented *Option 2*:

- The gravid female project would be cut. There is no obligation to continue and while \$4000 in staff time would be lost the usefulness of the project is unclear. The money could go toward the Port Susan MSA, Kayak Point and Workshops.

Jerry expressed hesitancy on cutting the crab project. He said that, on the pro side, we're this close to having something that we can call a benchmark. He would hate to see the MRC walk away from that.

Mike McHugh and Stef explained that a GIS analysis of likely crab habitat has been completed. They suggested that data from an Alaskan study and GIS could be used to make the argument for protection. Additionally, a lot of the tidal energy propositions will have to have studies that will likely include seafloor surveys. Mike M. proposed that it might be better to cut down the projects funding to \$10,000 and get a deliverable with the consultant that would be maybe just as valuable. Mike believes that there isn't that much more to be learned from a diving study.

Chrys asked if there will be time to propose something new.

Stef and Mike M. confirmed that it would be possible to put something together fairly quickly.

Jerry proposed that \$10,000 be moved from the Port Susan MSA to the gravid female project in order to get something worthwhile from the effort. The result would be to have money for the workshops, crab and Kayak Point.

Stef asked Mike M. what the minimum for the consultant to finish the gravid crab and get something worthwhile would be.

Mike responded that the investigation is good to this point. Based on hourly costs 200 hours should be covered by \$10,000 which will get a lot of work done.

Dena asked if 100% design is reached for Kayak Point if there is an obligation to move forward with it.

Stef and Chrys clarified saying no; there would not be an obligation to move forward once the design is complete. However, this is a risk associated with most restoration work. As far as staff can tell at this point, the major roadblocks to work at Kayak Point have been overcome.

Jerry proposed that the committee prioritize cuts to be made if the NWSC money ended up being less than \$120,000.

After discussion it was decided that for year one the potential cuts would include, in order, some funding from mussel watch expansion, one Shore Stewards workshop and Kayak Point. For year two the items to potentially be cut were the same, but because mussel watch will receive less money already the sediment study was added to the list.

Stef suggested that the sediment study be proposed to NWSC as a regional project.

Jerry proposed that the meeting wrap up with a motion to accept the amended budget of \$120,000 (Attachment A) and give staff and executive committee latitude based on the discussion of the group.

Mary made a motion to approve the \$120,000 budget with the above-mentioned amendments. Dawn seconded the motion. The motion was accepted unanimously.

Adjourn – Meeting adjourned at 8:40pm

Attachment A- Snohomish County MRC Proposed Budget 2009-2011 (\$120,000/year)

YEAR 1

Task Number	Task 1	Task 2	Task 3	Task 4	Task 5	Task 6	Task 7	Task 8	Task 9	
Task Title	Admin	Crabber Ed	Gravid Crab Study	Kayak Point	Sediment Study	PS MSA	Mussel Watch	Shore Stewards	Beach Watchers	Totals
Salaries/Benefits	12,000			12,035		7,000	4,550			36,085
Consultant Services		1,000	10,000	20,000			22,460	11,000	5,000	68,960
Printing/Copying		2,000						1,850	750	4,600
Equipment		500						550	250	1,300
Travel	3,000	250						550	300	4,100
Shipping							1,280			1,280
Advertising								1,500	500	2,000
Trainer Stipends								300	375	675
Refreshments/food								750		750
Telephone Charges									250	250
TOTAL	15,000	3,750	10,000	32,035	0	7,000	28,290	16,500	7,425	120,000

YEAR 2

Task Number	Task 1	Task 2	Task 3	Task 4	Task 5	Task 6	Task 7	Task 8	Task 9	
Task Title	Admin	Crabber Ed	Gravid Crab Study	Kayak Point	Sediment Study	PS MSA	Mussel Watch	Shore Stewards	Beach Watchers	Totals
Salaries/Benefits	12,000			10,798	37,237	16,000	7,410			83,445
Consultant Services		1,000					9,330	8,400	5,150	23,880
Printing/Copying		1,500					500	1,350	750	4,100
Equipment							100	400	250	750
Travel	3,000	500			250			450	300	4,500
Shipping							300			300
Advertising								400	1,500	1,900
Trainer Stipends								200	375	575
Refreshments/food								300		300
Telephone Charges									250	250
TOTAL	15,000	3,000	0	10,798	37,487	16,000	17,640	11,500	8,575	120,000

Snohomish County Marine Resources Advisory Committee (MRC)
Meeting Summary
Wednesday, April 15th, 2009, 6:30 – 8:30 p.m.
Snohomish County East Administration Building
Public Hearing Room, East
3000 Rockefeller Ave, Everett, WA 98201

<p>MRC Members Present Jerry Masters, Chair Mary Cunningham Lincoln Loehr Dena Peel Mike McHugh (Alternate for Daryl Williams) Jared Bond Thomas Hoban Kirby Johnson Daryl Williams</p> <p>MRC Members Absent Jen Sevigny (Excused) Chrys Bertolotto (Excused) Dawn Lawrence (Excused)</p>	<p>Staff, Presenters and Others Brent Hackney – MRC nominee Jon Houghton – Pentec Environmental Chris Betchley – WSU Beach Watcher Keeley O’Connell- People For Puget Sound</p>
--	--

<p>Summary of Decisions</p> <ul style="list-style-type: none"> • MRC Meeting summary for the March 2009 meeting was approved.
<p>Upcoming Events</p> <ul style="list-style-type: none"> • Earth Day at Union Slough, April 18th 10:00am-2:00pm. • Earth Day at Trinity Lutheran Church, April 19th, 8:30am-12:30pm, 6215 196th St. SW, Lynnwood, WA. • Picnic Point Ivy Pull, April 25th, 10:00-2:00pm, Picnic Point County Park.

Welcome, Introductions, and Approval of March Meeting Summary

Jerry Masters called the meeting to order at 6:36pm which was followed by introductions. Jared announced that after 7PM the elevators will no longer go down to the parking garage and all in attendance should take note. Stef Frenzl responded, saying that he’s working with the sheriff’s department to remedy this problem. Jared asked that future word documents be sent out in a compatible form, .doc or .pdf, not docx. Tom Hoban motioned to approve the amended meeting minutes from March, 18th 2009, Mary Cunningham seconded the motion and all other members approved.

Public Comment

Keeley O'Connell announced that 34 new Sound Stewards were recently trained. She continued saying that People For Puget Sound added Willow Creek in Edmonds Marsh as a new restoration site. Additionally, 200+ people will be volunteering at Union Slough on the April 18th. Mike Tillotson announced he will host an MRC booth at the event.

Jerry inquired about a letter sent to the MRC from the Washington State Department of Health (WDOH) about threats to an established commercial growing area. He asked what body of water the letter was in reference to. Stef said he expected it was in reference to South Skagit Bay. Mike McHugh clarified the issues surrounding the area and commented that there is a large shellfish growing area in south Skagit Bay and every year the WDOH notifies affected parties to concerns that observed levels of fecal coliform should be watched for possible area closure. The Stillaguamish Clean Water District is working with local stakeholders, tribes and the WDOH to get the remaining marine waters of Snohomish County, roughly north of Kayak County Park, recertified and thus reclassified as a commercial growing area. Recently Snohomish County Surface water Management received a grant to address this concern and a final report should be completed by the end of June 2009. Mike suggested that it's something the MRC should request a presentation on from Sean Edwards and that the consultant selected to assist the County, Pacific Shellfish Institute, is a leader in area reclassification efforts.

Jerry announced that Brent Hackney and Keeley O'Connell have been nominated to fill empty positions on the MRC and that he hopes to be able to make them full members by the next meeting.

Stef announced that the Marine Resources Program will be receiving another Washington Conservation Corps-Individual Placement next year.

Acknowledgment Celebration for Kirby Johnson and Daryl Williams' MRC Service

Jerry acknowledged the nine years of service given by Kirby Johnson and Daryl Williams. They were the only original members of the MRC remaining. Kirby and Daryl spoke briefly on their time with the MRC and thanked the group. Jerry presented both with thank-you cards and MRC logo glass pieces.

Jetty Island Beach Nourishment Monitoring Report – Jon Houghton, Pentec Environmental

Jon Houghton gave a presentation on the Jetty Island monitoring project. He gave an overview of the history of the island and its changes through time. He described the creation of the island and the shift to a more structured renourishment regime with the construction of the tidal lagoon and protective berm, which has shown significant habitat benefit. He went on to describe the continued efforts including work on broom suppression and expansion efforts on the South Island. The MRC contributed funds for a 2007-08 monitoring regime that involved beach profile, plant, grain size and LWD recruitment surveys. Jon described the sampling processes and the results of surveys to this point.

Mike McHugh asked about the monitoring of Large Woody Debris. Has there been any effort to place LWD for the stabilization of the berm?

Keeley explained that she had walked the berm and used GPS to document large wood, but no configuration data has been documented. Keeley mentioned that an effort is being made to develop a monitoring protocol that could be implemented by volunteers.

Tom asked if forage fish spawning had been documented or if Spartina is a problem.

Jon responded that there no formal studies have been conducted regarding forage fish, but anecdotal evidence suggests they're around. Habitat-wise, there's no reason they shouldn't be spawning. There's a little Spartina, but it is under control for the time being.

Jon continued, discussing the south island expansion project and its potential benefit for erosion problems on the north side of the island. He went on by talking about the broom and blackberry suppression efforts and finished by talking about planned efforts including 2000ft expansion in the south, monitoring and broom suppression.

Mary asked how much of the dredge spoils is used.

Jon replied that for a few years they've used all of it, but there's increased concern about dioxin issues, so pending tests will provide more answers regarding the future use of dredge spoils.

Mary asked if the dredge already placed on the island or just the future material would be tested for dioxins.

Jon answered that it would be just the future material. The longevity of a Corps permit and testing has run out.

Update from NWSC – Report on Dungeness crab Presentation from WDFW and NWSC budget – Tom Hoban

Tom gave an overview of the NWSC system. He gave a summary of a WDFW presentation on the Puget Sound crab fishery. Mike McHugh. added to the presentation discussing the details of the various fishing seasons and the dynamic between State recreational and treaty commercial fishing. Mike commented that the tribes as a collective are receiving better estimates of recreational landings via WDFW's new method to calculate their recreational fishery landings. In general, the tribes and State agree that compliance (only taking 5 crab per day per fisher) is the next issue that needs to be addressed but that current funding to better assess the State recreational fishery does not exist. Currently, the local Snohomish County fishery (MA 8A or known as 8-2) is doing well, but outside of our area there are some questions.

Stef provided other updates on the MRC: With regards to the NWSC Reauthorization Bill, each MRC will get \$120,000. There will also be a Benchmark Fund with \$160,000 available for new projects, through a competitive application process, that have to be completed by June 2010. The Northwest Straits Foundation applied for up to 4 million dollars from NOAA to remove 75% of known derelict fishing gear in the NW Straits. Deana will present at the next meeting on the crabber education program and Arden Thomas from SWM will present on the sediment placement project.

Keeley clarified that the NWSC won the Magnuson award, a very prestigious honor.

Subcommittee Brainstorming: Round 1

Stef asked Mike McHugh a question regarding the amount of poaching going on in the recreational fishery based on information he heard from Don Velasquez, WDFW.

Mike explained that both State and treaty managers suspect that there is a very high level of poaching associated with the recreational crab fishery. WDFW only has a few marine patrol staff in the area and it's very uncommon for them to write tickets. Instead of tickets, WDFW Enforcement conducts emphasis patrols and will usually be involved in approximately 500 to 700 encounters during the first couple days of recreational crab fishing in the Everett area and observe most fishers have female crab on board or small crabs less than legal sized. Based on personal observations at the Tulalip docks and those Snohomish County Marine Resources Advisory Committee

of Marysville and Everett, people are taking home buckets full of crabs on a regular basis. There appears to be a high level of “the government won’t catch me,” justification or one of “I’ve got to get mine, because I’m not coming back next week” to drive the concept that justify the poaching. People caught poaching during the emphasis patrol usually receive only warnings and in-season enforcement is very low after the initial days the recreational fishery is open. The Tulalip Tribes manages mostly commercial fisheries, which are more closely regulated.

Jared asked what the answer is to this problem. Mike McHugh explained that the State does not dedicate the needed funds to adequately enforce all the State’s waters with on water monitoring or patrols.. One initial step would be for the State to increase the fees associated with recreational crab fishing and tie those revenues into enforcement and monitoring. Currently, only a small fraction of the less than \$20 license fee for shellfish is aligned solely for crab management with the remaining fees directed to the general fund. The tribes have asked the State to increase their collection of fees for recreational fishery management as a daily landing of crab (5) is about 10 pounds of product. This 10 pounds of product would cost a person \$4.99 to \$6.99 per pound in the grocery store. Mike commented that as a recreational fisher and a biologist/manager for the Tulalip’s he’d gladly pay \$30 per year for a crab license if the revenues were directed to marine stewardship and or crab management. Tom pointed out that they tried at some point to refuse a future permit to people who didn’t return catch record cards the previous year, but such ideas get shot down; Olympia is afraid of the sport fishery and feels obligated to give them an opportunity.

Project Brainstorming

Stef explained that the process is intended to move projects forward. Stef wanted to give the leads of the different projects a chance to talk with people - now that the budget has been established - to talk a bit more.

Jerry proposed that with the little time left in the meeting it might be more useful to adjourn early and have project leads encourage discussion outside of the meeting.

Mary asked about the state of the mussel population at Eide road.

Stef and Amy Johnson suggested that it would be necessary to make another site visit. Tom said in between summer ’08 and present he observed the site and saw very few and only small mussels.

Lincoln Loehr said that there is a Shoreline group that is interested in a Mussel Watch site.

Mary asked Mike McHugh about collecting mussels on Tulalip.

Jerry asked that everyone continue discussion via email, attend the NWSC meeting if possible, do something to help projects move forward.

Stef suggested that people interested in regional projects should submit them and CC him on any emails.

Keeley described her interest in a regional Spartina kayak survey. She then announced that P4PS applied for stimulus funding to build a railroad bridge on the BNSF line in Tacoma. The group discussed interest in working with BNSF at Lund’s Gulch also for Meadowdale beach access.

Adjourn

Meeting adjourned at 8:26pm

Snohomish County Marine Resources Advisory Committee (MRC)

Meeting Summary
Wednesday, May 20th, 2009, 6:30 – 8:30 p.m.
Snohomish County East Administration Building
Public Hearing Room, East
3000 Rockefeller Ave, Everett, WA 98201

<p><i>MRC Members Present</i> Mary Cunningham Dawn Lawrence Lincoln Loehr Mike McHugh Jared Bond Thomas Hoban Keeley O’Connell Brent Hackney</p> <p><i>MRC Members Absent</i> Jen Sevigny (Excused) Chrys Bertolotto (Excused) Jerry Masters (Excused) Dena Peel (Excused)</p>	<p>Staff, Presenters and Others Melinda Gray, AMEC Stef Frenzl, Acting SnoCo MRC Lead Staff</p>
--	--

Summary of Decisions

- MRC Meeting summary for the April 2009 meeting was approved.
- MRC approval to support reauthorization of the MRC through Snohomish County Code 2.800.
- MRC approval to submit a grant proposal to the NWSC Benchmark Fund for the Kayak Point Project

Upcoming Events

Beach Expos-

- June 6: Olympic Beach, Edmonds
- June 20: Picnic Point, Lynnwood
- July 23: Mukilteo Lighthouse Park
- August 22: Kayak Point County Park, Stanwood

Tri-County Crabber Escape Cord Educators Orientation

June 2, 10 AM – 1 PM, Jennings Park Barn in Marysville

Beach Condition & Biota Monitoring (WSU Beach Watchers)

Training: 6/13, 9 AM – 3:30 PM, Stanwood (location pending)

Welcome, Introductions, Approval of April MRC Meeting Summary and Announcements

Dawn Lawrence called meeting to order at 6:37pm, which was followed by introductions. Mary Cunningham motioned to approve the meeting summary from April 15, 2009. Mike McHugh seconded, and MRC members approved.

MRC Staff presented the following announcements:

- Alan Mearns received a Public Service Award for his service on the MRC and other efforts by the Federal Executive Board.
- Film- A Sea Change- a World Without Fish. A documentary on ocean acidification. TWO SCREENINGS: Monday, June 1, 7 pm, Egyptian Theatre, Seattle; Tuesday, June 2, 4 pm, Kirkland Performance Center, Kirkland
TICKETS: \$11. Purchase on the Seattle Film Festival website, www.siff.net, or call 206-324-9996

- **Represent the MRC at a Beach Expo Near You!**

The MRC continues to have a physical presence in our community during Beach Expos. This year, there are four opportunities to talk with beach visitors about MRC activities, our local shorelines and the fascinating creatures all around us. Join our partners by staffing the MRC table, including the very popular touch tank. All events are on Saturdays from 10 AM – 2 PM.

- June 6: Olympic Beach, Edmonds
- June 20: Picnic Point, Lynnwood
- July 25: Mukilteo Lighthouse Park
- August 22: Kayak Point County Park, Stanwood

There will be restoration work parties going on at Picnic Point and Kayak Point County Parks. Keeley- Sound Stewards will be leading opportunities in the county throughout the summer. Staff passed around a sign in sheet for MRC members to volunteer.

- **Tri-County Escape Cord Educators Orientation**

June 2, 10 AM – 1 PM

Jennings Park Barn in Marysville

Join WSU Beach Watchers from three counties as we prepare for another year of local recreational crabber education. Last year, Skagit and Snohomish County Beach Watchers spoke to over one thousand crabbers. 98% of the people we talked to said they intended to use escape cord after our one-on-one interaction – that's a huge intention for changed behavior! And we provide free supplies to increase the likelihood that they'll carry through with that intention.

On June 2nd, the training will include Washington Department of Fish and Wildlife and Snohomish County Surface Water Management experts to get the latest information on Dungeness crabs, its fishery and regulation, and education techniques.

Snohomish Plans: Opening days are on July 1st, 2nd and 3rd. Snohomish County Beach Watchers will be at the Everett Boat Launch, Dagmars, Ebey's Landing Launch, Kayak

Point County Park and Edmonds Marina. Times are being checked by local leads to make sure we are there when most crabbers are there! If there is interest, we can also go out on the opening of the Chinook Fishery on 7/16 to Everett or Edmonds since many fishers drop crab pots while fishing.

- **Beach Condition & Biota Monitoring**

Training: 6/13, 9 AM – 3:30 PM, Location Pending (Stanwood)

In 2007 Skagit County Beach Watchers began collecting pre-restoration beach condition data on March's Point. Snohomish Beach Watchers began Kayak Point Monitoring in 2008. Neither restoration project has been completed, allowing us to collect additional baseline data – important because beaches are not static systems! We will also be integrating the biological monitoring into the pre-restoration monitoring efforts for the first time.

Both Counties will be using similar methodologies for a proposed beach restoration on Shannon Point property at the tail end of summer and at Mukilteo Lighthouse Park for the first time this year!

In order to make the most of local expertise, we are doing a two county training, and then following up with local field visits. Learn how to monitor elevation, biological community composition, substrate diversity and algal coverage, practice and get hands-on experience.

Mukilteo Lighthouse Park: June 24 (10AM – 3PM); July 23 (10:30AM – 3PM)

Kayak Point County Park: June 22 (9AM – 2:30PM); June 23 (9AM – 3PM); July 21 (8:30AM-1PM); July 22 (9AM – 2PM); August 19 (8:30AM – 12:30PM)

Contact your local Beach Watcher Coordinator to get signed up or get more details. The training is highly recommended since there are changes to the way we have done things! Please join us!

Washington Conservation Corps Individual Placement

Mike Tillotson was offered a position in Cape Cod and is no longer working with the MRC. MRC staff is finding a part-time intern to help us this summer with Picnic Point Stewardship, Beach Expos and Mussel Watch.

MRC Lead Staff Position

Owen Carter, SWM's Acting Director, has put a hold on filling all vacant positions, and has given indication that that they will remain that way for some time. SWM is anticipating significant progressive cuts in funding over the next two years due to annexations and loss of REET funding. They anticipate cuts up to \$3 million or more across SWM, which would have ramifications across our entire division. Our director is currently assessing every group within SWM to look for improving efficiencies, and identifying programs that do not have legal mandates or drivers. Our Director is concerned with bringing on new staff only to possibly have to lay them off in January.

Dave Ward and Mike McGuinness are meeting soon to identify options or alternatives for other SPA staff to backfill on an interim basis for the Marine Steward position.

Dawn Lawrence noted that her mother and sister are looking forward to seeing DNR remove creosote logs via helicopters from Camano Island, on Long Beach.

Public Comment

No public comments.

MRC Reauthorization

Five years have passed since the MRC was authorized under Snohomish County Code 2.800. The provision sunsets in September 2009, and staff has begun determining if and how the County should amend the existing code's language. Snohomish County staff is considering several amendments, and asked for the MRC's feedback about several ideas.

Increasing the number of MRC members to include:

- **The WSU Beach Watcher Coordinator position.** Chrys Bertolotto has been participating at MRC meeting for the past 4 years. The WSU Beach Watcher program is an essential component to the success of the MRC's work program, and this addition would help ensure long-term continuity and collaboration between the MRC and the Beach Watcher program. The MRC concurred with the idea of adding the WSU Beach Watcher Coordinator position to the MRC.
- **Representation from the Port of Everett or other agencies that have a heightened influence on marine resources in Snohomish County.** Dawn Lawrence stated that the MRC has spoken for a long time about adding a representative from the Port of Everett, as the Port of Everett is in Snohomish County only, and covers a wide area of the shoreline within the county. Mary Cunningham acknowledged that the MRC has had some challenges with getting consistent participation from the Port of Everett, and recommended that the MRC staff contact the Port of Everett to inquire about their interest in a formal position on the MRC. Keeley O'Connell attends 4-6 Port Commissioner meetings per year, and has an ability to help improve the visibility of the MRC with the Port of Everett as well.
- **Youth representation (under 18 years of age).** Dawn Lawrence suggested that it would be extremely difficult for any teenager to make a 3 year commitment and get up to speed at the level where their participation would be helpful. Dawn likes the idea of having a youth voice, but recommended that the county and MRC include more effort to increase participation from WCC, community colleges, etc instead of formally appointing a youth representative. Keeley suggested to find someone in one of the community colleges that are on a longer tract program (2-3 year program) focused on environmental education, and bring environmental education to youth with MRC. Dawn says she hasn't done a good job touching base with community colleges, and she'd like to get staff members at the community colleges involved. Dawn offered to take this on in September.
- Other Recommendations for Consideration:
 - Citizen At Large Position (up to 2 positions recommended)**
Mary suggested that the County include a citizen at large position without formal representation. Keeley noted that Skagit MRC has two citizen at large positions. The citizen-at-large would be someone who can make a commitment

Higher Academic Institution Representative

Jared Bond suggested that having a position filled from academia would be useful. If a teacher/professor is represented here, that could be very helpful. Keeley thinks academia is a great way to get people involved and suggested that Skagit MRC is a good model to consider.

The current language in the MRC authorizing code does not specifically address how the MRC shall fulfill its duties and responsibilities by identifying the connection between the Northwest Straits Commission and nexus with federal funding allocations via the MRC grants. County staff plans to include language describing this nexus to clarify that that these grants play a vital role in ensuring that the MRC can fulfill its duties and responsibilities.

Mary Cunningham made a motion to approve reauthorization of the MRC for another five years and to revise Snohomish County Code 2.800 to: 1) increase the number of MRC members from a maximum of eleven members to a maximum of thirteen members; and 2) clarify the nexus between the MRC and the Northwest Straits Commission grants. Lincoln Loehr seconded the motion. No discussion. Motion approved by consensus.

Staff will send the draft MRC reauthorizing language to the MRC for review and comment prior to submitting to the Council.

The MRC reauthorization is serendipitous timing because it offers the MRC a strong reason to reaffirm the MRC's important work and also meet with the Executive and Council to relay the importance of having county staff available to the MRC so the County can fulfill its grant contract responsibilities. Jerry Masters is planning on drafting a formal letter to our SWM director requesting that the MRC has adequate staffing, and engaging the conversation with our SWM director first. Staff recommends that the take-home message that the MRC should consider giving is that, even if the County is not able to provide funding to the Marine Resources Program, the funding from NWSC could be amended to ensure that a position is maintained within the county.

Staff recommends that a small group gets together over the next month to discuss a specific back-up plan for how the MRC should change our grant contract with NWSC in the event that County funding is no longer available. At next month's MRC meeting, this small group could present to the rest of the MRC and allow time for a thoughtful discussion. Jerry Masters, Mike McHugh, Jared Bond, Keeley O'Connell and Dawn Lawrence offered to participate in this small-group discussion.

NWSC Benchmark Funds

Background: The Commission has approximately \$161,000 in unspent funds from a variety of budget lines that must be spent out by June 30, 2010. NWSC has created a Benchmark Fund that MRC's can apply for through a competitive process.

Goal of the Account: to provide funding for approximately 1-3 MRC projects that will move us towards achieving benchmarks. These projects are expected to be priority MRC

projects that were too big or not ready to be included in the regular MRC budget process. NWSC is encouraging projects with budgets of \$50,000 - \$161,000.

Priority will be given to projects that:

1. have on-the-ground measurable results or demonstrate meaningful connection to improved resource protection;
2. involve a geographic region beyond one county;
3. leverage additional resources (cash, in-kind support, and/or volunteer hours).

Projects will not be funded that:

1. do not show strong connection to an MRC strategic plan or work plan
2. do not demonstrate the ability to be accomplished by June 30, 2010

Applications will be accepted between June 1 and June 15, 2009.

Staff spoke with Ginny Broadhurst at NWSC, and Ginny anticipates this process to be highly competitive.

The MRC reviewed the following proposed project ideas and gave the following feedback:

Kayak Point

Staff briefly reviewed project design and scope of work. The grant application would cover development of final design, cost specifications, monitoring, education, and possibly permit acquisition. The MRC recommended submitting grant application for Kayak Point. Mike McHugh offered to review the application. Tom Hoban recommended that it will be very important to stress the broad geographic appeal and impact of the project.

Port Susan MSA

Mary Cunningham suggested that because the Benchmark Fund is looking for projects that will directly contribute an on-the-ground impact, that the MRC not submit an application for the Port Susan MSA project at this time.

Sediment Study- Originally, staff considered this project for the Benchmark fund; however, staff is recommending that we not pursue funding for this project at this time due to the interest for projects with a direct on-the-ground impact. The sediment study is a first step toward this process, but is a few years away from seeing tangible benefits of this nature.

Pacific Northwest Chapter Society of Environmental Toxicology and Chemistry Conference Report (Lincoln Loehr)

Lincoln Loehr and Alan Mearns attended the conference, and distributed a program with abstracts and a few talks. Lincoln touched on a few of them.

- There was a high school sophomore from Montana from a tribal school that gave a fascinating presentation on mercury on lake trout. The study found substantial concentrations, significant health risk and identified the source as atmospheric deposition.
- Bob Johnston at Puget Sound Partnership and the US Navy presented a program for Environmental Investment to start looking at bigger picture things and getting more info on types of levels of contaminants in biota. PSAMP trawled and measured contaminants in bycatch sea cucumbers, ratfish, rockfish, etc, including mussels

from Mussel Watch, and deployed caged mussels. They worked up target tissue levels that represent risks to aquatic life, wildlife and humans. Then they presented to different areas in Puget Sound including Port Gardner the distribution of contaminants in tissues in a way that matched up to what species they were in and what trophic issues they were in. PSAMP also showed human health issues for Elliott Bay and Sinclair area, based on consumption rates on fish. There was a superfund cleanup risk assessment looking at 10 to the minus 6 level, then everything came in at this risk. Lincoln thinks we'll be able to get useful information for Port Gardner from this PSAMP project.

- Lincoln also described another presentation assessing the effects of copper on olfactory senses of juvenile salmonids. The study shows that copper levels known to be found in Puget Sound streams have a significant effect on juvenile behavior, which makes them more susceptible to predation. Another presentation with additive vs synergistic effects of pesticides on salmon, and found less active mobility and feeding, which could affect salmon survival.
- Another presentation discussed an effort to revise the list of priority pollutants for the state of Oregon. The old list was developed over 30 years ago. When Oregon is complete with their effort, it'll be useful for Washington State to consider taking this on.

Update from NWSC- MRC Presentations (Tom Hoban)

The newly assembled science team attended the April NWSC meeting to hear presentations from MRCs. Arden Thomas presented the nearshore sediment between Edmonds and Everett, had info on several landslides on bluffs, she mentioned concerns with the outflow of the brightwater facility and displacement of forage fish from rip rap of railroad lines and fuel storage facilities. A study will help us be aware of our current health of area and using good science and stewardship. Dena Peel presented lost fishing gear presentation. She presented that we need to have more education to prevent pots from getting lost in the first place. Although a great number of pots have been removed, it seems that as many pots are lost each year. WDFW has not been a leader in finding solutions, and our MRC is taking a leadership role. Tom also mentioned an Island County MRC Water Quality program designed to prevent future contamination in Penn Cove by routing wastewater from the treatment plant to a sub-surface piped system to fertilize new trees with deep roots in order to protect Penn Cove shellfish beds.

Mary asked if the science panel provide feedback. Tom said that they were more there to learn more about projects. There were a few on the science panel who didn't attend because they didn't have the funding to participate.

Other Items: Derelict Gear Removal

Mike McHugh wanted to clarify Tulalip Tribes' perspective with regards to derelict gear accumulation in Port Gardner. Tulalip Tribes have gear stolen. Mike thinks that 10% of the lost pots are Tulalips. The winter gears are long-line and so they don't want to lose equipment, so they do long-line. Tulalip Tribes have a derelict gear reporting form and report to NWIFC, and are figuring out ways to have their fishermen have a depth sounder. Mike says that they lose 10% of their pots a year, which totals up to 360 pots per year, but he acknowledges that many members may not report lost pots. Mike is passing out maps

of lost pots and the topic is at our next NWIFC meeting. Tulalip Tribes are considering pursuing a formal complaint regarding the Port Gardner fishery because the volume of lost pots could potentially out-fish the Tulalip fishery 3:1. Tulalip Tribes give fisherman a long strand of cotton each year to use as escape cord.

Adjourn Meeting

Dawn adjourned the meeting at 8:25pm.

Snohomish County Marine Resources Advisory Committee (MRC)

Meeting Summary
Wednesday, June 17, 2009, 6:30 – 8:30 p.m.
Snohomish County East Administration Building
Public Hearing Room, East
3000 Rockefeller Ave, Everett, WA 98201

<p><i>MRC Members Present</i> Chrys Bertolotto Brent Hackney Thomas Hoban Lincoln Loehr Jerry Masters Mike McHugh Keeley O’Connell Dena Peel</p> <p><i>MRC Members Absent</i> Jared Bond (Excused) Mary Cunningham (Excused) Dawn Lawrence (Excused) Jen Sevigny (Excused)</p>	<p>Staff, Presenters and Others Stef Frenzl, Acting SnoCo MRC Lead Staff</p>
--	---

<p style="text-align: center;">Summary of Decisions</p> <ul style="list-style-type: none">• MRC Meeting summary for the May 2009 meeting was approved• MRC approval of revisions of 2 Year Work Plan
--

<p style="text-align: center;">Upcoming Events</p> <p>Beach Expos-</p> <ul style="list-style-type: none">• June 20: Picnic Point, Lynnwood• July 25: Mukilteo Lighthouse Park• August 22: Kayak Point County Park, Stanwood <p>August Potluck</p> <ul style="list-style-type: none">• Tom Hoban is coordinating
--

Snohomish County Marine Resources Advisory Committee Meeting Summary, Wednesday, June 17, 2009, 6:30 – 8:30 p.m.

Welcome, Introductions, Approval of April MRC Meeting Summary and Announcements

WSU Beach Watcher Program

Don Meehan, Program Director for Natural Resources Stewardship for the state, gave a brief history of his experience working with the NWSC and MRCs. In 1989 he started the Beach Watcher program in Island County, and then in 1999 he sat on the Kitchen Commission which created the NWSC. Don has great interest in Puget Sound, and was the lead for Island County MRC for a number of years. Five years ago, he pushed to have the Beach Watcher program partnered up with each MRC. The Island Beach Watchers and MRC had a good relationship, and they went forward with Federal government support through Sen. Patty Murray. Sen Murray got behind the idea, and 5 years later, we now have a 7 county Beach Watcher program. Don's interest in attending the meeting is to encourage the MRC to continue funding the BW program, and to describe his effort to partner with Puget Sound Partnership to fully fund the program in the future. WSU was awarded EPA funds to support the BW program, and now that the existing grant is coming to a close, WSU will have to compete for EPA funds. There's a big need and desire to keep the WSU Beach Watcher program going because he believes it's a formula that has worked well. Every MRC has benefited greatly from the partnership. Don's bottom line message that he's hoping is that some unspent funds that are given back to NWSC will go to WSU Beach Watcher programs. They're asking \$25,000 from NWSC Benchmark Account. PSP has committed some funds, and WSU has some funding they're contributing as well.

Beach Docents

Chrys Bertolotto gave a handout for events that are going on at Mukilteo and Kayak Point. They've worked with over 1000 students already. There's more to come this summer. Chrys is selling great Salish Sea ID cards. \$16.50 per set. They're new and made by periwinkle press. Website: ezid at any of the Beach Watcher websites.

NWSC Reauthorization

The Northwest Straits Initiative's reauthorization bill received a hearing during a Senate Committee meeting last week. The Senate Commerce Committee is gathering all information including letters of support for our reauthorization by this Friday. Jerry will coordinate sending a letter on behalf of our MRC.

MRC Reauthorization

Stef sent the draft to the County PA and is waiting for their review.

Beach Expos

This Saturday, June 20th from 9:00 to 3:00 at Picnic Point. Dena is signed up, and Keeley will be coordinating a field stewardship effort.

Upcoming Expos:

- July 25rd from 9:00 to 3:00 at Mukilteo. Mary and Lincoln are signed up.

- August 22nd, 9:00 to 3:00 at Kayak Point. Brent, Tom, Dawn and Keeley (weeding) signed up.

Kayak Point Grant Application

Stef submitted a grant application for the Kayak Point Restoration project for \$104, 800. Tom Hoban said that there were many good applications from almost all MRCs.

Marine Steward Position

Stef mentioned that the County should be moving forward with hiring process soon. We've revised the NWSC grant to fully cover a staff person, per the County's request.

August Potluck with Island MRC

There will be no regular scheduled SnoCo MRC meeting in August. Stef told the MRC that there will be no staff time available for staff to coordinate the potluck, and requested leadership from the MRC. Tom offered to help coordinate. The MRC discussed and agreed to invite elected officials including Patty Murray, Rick Larson, Snohomish County elected officials, and possibly others. There was discussion about inviting Island MRC or keeping the potluck limited to Snohomish MRC members. Chrys noted that if we plan to hold the potluck in Mukilteo, we need to reserve the shelter soon. Stef will send an online schedule request to identify possible dates that will work.

Sustainable Futures

Jerry Masters checked in on the Snohomish Sustainable Futures. They have a facebook page now. Jerry thinks we should establish more coordination with the Sustainable Futures group, especially as it relates to Low Impact Development. Don Meehan said that WSU Extension is working to enable volunteers to develop own raingardens. Don sees this as a project that MRCs can easily get behind. Jerry would like to get the MRC reappointed with Sustainable Futures.

Public Comment

No public comment

DG Removal Report

Brent Hackney gave a presentation and showed photographs of his experience while on the derelict gear removal boat with Natural Resources Consultants (NRC) in May 2009. The boat removed derelict gear at Kayak Point and in Port Gardner. Brent explained that he originally was skeptical of the benefit of escape cord, but after this trip on the boat, he has converted as a "believer in escape cord." In total, NRC removed 187 pots, of which 31% commercial-type pots and 69% sport pots. Forty seven pots were actively fishing, and 160 Dungeness crab were removed. Fourteen pots were returned to the Tulalip Tribes. There was discussion about commercial pots getting sabotaged, and Chrys mentioned that she's talked to people who have seen non-tribal people cutting tribal pot lines.

Port Susan MSA Resolution

Chrys Bertolotto handed out copies of the draft resolution and map for the Snohomish County Council to support the establishment of a Port Susan Marine Stewardship Area in Snohomish County marine waters. Mike asked how the south boundary was identified. Stef noted that several years ago there was discussion around U&A concerns brought up

by Todd Zackey. Mike McHugh said that there are no U&A concerns in this area, but agreed that if the southern line is extended, Tulalip Tribes may not approve the map due to harvest reasons.

Chrys requested to receive comments, and then approval to move through the county process.

Jerry said that the only question he has, he thinks we should include the word “voluntary” all the way through the document. Jerry says that this makes more sense to help people understand the intention of the resolution. Chrys will include the word with a small “v” at the “Therefore” line.

Tom asked if this resolution will cost anything. Jerry responded that county funds will help pay for this within the Marine Resources Program budget. Jerry explained that because this is a voluntary, citizen-based initiative, no entity will be required to contribute to the project. Chrys noted that the last whereas clause talks about funding with outside sources.

Don noted that it is standard policy to get general support without having clarity on how the program will be funded. Future resolutions will clarify uncertainties such as funding. Don recommended bringing the tribes into this.

Mike sent the resolution to Tulalip Tribes legal review but has not heard back. Mike noted that there may be an issue with creating more bureaucracy. There are two tracks of Tulalip Tribal review to support the resolution: an environmental review and a commercial review. Both tracks must support the resolution in order to get formal support from Tulalip Tribes.

Mike recommends that we table the discussion and receive direction from Tulalip Tribes’ directors or business community about the resolution. Mike stated that he believes it is not appropriate for the MRC to formally support this resolution until Tribes have given formal support.

Chrys noted that there is no intention among the Port Susan MSA working group, which includes the Tulalip Tribes, to have new or expanded regulations. However, this would help to coordinate regulating agencies/jurisdictions.

Mike asked who the project leads are on this project. Chrys explained history. Mike recommended that a slow approach will likely be most effective, and that even though the MRC has been working on this project for two years, not all decision makers at the Tulalip Tribes have been briefed on the project. Tulalip Tribes needs to further engage their decision makers before formal support can be given.

Mike made a motion to have the MRC draft a letter addressed to Kit Rawson and Danny Simpson, Tribal Executive of Fish & Wildlife, to further encourage the Tribes to consider the resolution. Chrys will draft a letter and send to Stef. The MRC agreed to table this effort until the July MRC meeting.

MRC Work Plan Revision

Review, revise and approve MRC 2-year work plan based on revised budget

Stef presented the revised budget proposal to the MRC for approval. Due to budget constraints at the County, Snohomish County interim Director, Owen Carter, told staff that the County will not rehire the Marine Resources Steward position unless the MRC can fully fund a staff person from non-county funding. MRC staff has revised the NWSC grant proposal to increase grant funding in Task 1: Administration to fully cover all grant administrative tasks, in addition to revising the program's budget to ensure that the NWSC grant covers adequate staff time for the 2 year period. Stef presented the budget to the MRC and described where changes were made.

Chrys Bertolotto requested that \$4500 be used from the NWSC Grant in Year 2 to support the Shore Stewards project. Stef moved \$4500 from NWSC Grant funds to County funds to cover the Mussel Watch lab fees, and allotted \$4500 in NWSC Grant funds to the Shore Stewards project.

The MRC approved the 2-Year budget with changes described above (see attachment A).

Report on previous NWSC meeting

Tom Hoban noted that NWSC received seven applications for NWSC Benchmark Account funds. All applications look like strong proposals. Project proposals range from creosote log removal, mapping wetlands, mapping feeder bluffs, among others. Although NWSC was hoping to receive projects that have a regional impact, only one proposal involving two MRCs was received (from Skagit and Island MRCs).

At the last NWSC meeting, commissioners also reviewed MRC grant proposals for the 2-Year Work Program. There was much discussion about funding administrative duties. Comment was made that Snohomish MRC has been effective at keeping a low administrative request over the past few years, and that NWSC would like all MRC's to cap administrative expenditures at 20%. Tom mentioned that Snohomish County's requirement to have the NWSC grant fully fund the Marine Resources Steward is not ideal from the NWSC's perspective.

Tom noted that the Canoe Journey water quality monitoring project last year was very successful, and the effort will be continued this year.

Susan Shell gave a presentation on forage fish habitat.

Adjourn

Jerry Masters adjourned the meeting at 8:50pm.

Snohomish County Marine Resources Advisory Committee (MRC)

Meeting Summary Wednesday, July 15, 2009, 6:30 – 8:30 p.m. Snohomish County East Administration Building Public Hearing Room, East 3000 Rockefeller Ave, Everett, WA 98201

<i>MRC Members Present</i> Chrys Bertolotto Mary Cunningham Brent Hackney Thomas Hoban Dawn Lawrence Lincoln Loehr Jerry Masters Mike McHugh Keeley O'Connell Dena Peel <i>MRC Members Absent</i> Jared Bond (Excused) Jen Sevigny (Excused)	<i>Staff, Presenters and Others</i> Stef Frenzl, Acting SnoCo MRC Lead Staff Michael Kite Amy Johnson, Edmonds Community College Caroline Gibson- NWSC Jon Houghton- Edmonds Melinda Gray- AMEC
---	--

Summary of Decisions

- MRC Meeting summary for the June 2009 meeting was approved

Upcoming Events

Beach Expos-

- July 25: Mukilteo Lighthouse Park
- August 22: Kayak Point County Park, Stanwood

August Potluck

- Potluck is scheduled for August 18, 2009. Tom Hoban is coordinating

**Snohomish County Marine Resources Advisory Committee Meeting
July 15, 2009, 6:30-8:30 p.m.**

6:30 Welcome, Introductions, Approval of June MRC Meeting Summary and Announcements

Meeting Summary

Jared Bond motioned to approve the June 17 MRC meeting, Seconded by Keeley. June 17 MRC meeting summary approved.

Announcements-

Stef Frenzl noted the nine-page document he sent via email with the MRC Agenda.

Chrys Bertolotto is working to reform the Beach Watcher Advisory Committee. She has a description and would like to have a MRC member sit as an Advisory Committee member. Meetings will be held on a quarterly basis.

Keeley O'Connell announced that People For Puget Sound received \$34,000 to run kayak based survey program for Spartina. The program is funded by regional funds from NWSC. Right now there are no priority shorelines in Snohomish County. Lincoln Loehr has been monitoring Spartina by train along the shoreline. Most of the surveys will be performed in Skagit County, Island County, Kitsap County, Clallam County, San Juan County, and others. Snohomish County paddlers are welcome to participate. For more information, go to the following website: pugetsound.org.

United Way Day Of Caring is Friday Sept 18th. Site to be determined- Jetty Island and Union Slough are under consideration. Employers recruit employees to do community service. If you're an employer, you can sign up through the United Way website.

People For Puget Sound is hiring a Director of Policy. More details are on the People For Puget Sound website.

2007-2009 NWSC Grant Deliverables

All deliverables in the 2007-2009 NWSC Grant Contract have been completed and submitted to NWSC. We spent 100% of the grant funds. If you would like copies of any of the final reports, please contact the MRC Lead Staff.

2008 Kayak Point Grant Deliverables

Stef plans to finish the reporting for the Kayak Point Project Grant within the week. Due to unanticipated stalls with the project, we were delayed in moving forward with a variety of project tasks. As a result, we were not able to spend approximately \$60,000. We were able to obtain a 30% design of the preferred alternative, and also installed a kiosk for outreach. If you are interested in reading the report once completed, please contact the MRC Lead Staff.

South County Shoreline Sediment Study

The Nearshore Sediment, Nourishment and Feasibility Study was chosen for local funding in the amount of \$142,280 by the Snohomish Basin Salmon Recovery Forum. \$25,200 in MRC funds from our NWSC grant were used as match to acquire these funds (meaning

we've now leveraged our \$25,200 with another \$142,280). Funding must still be reviewed and approved by the Salmon Recovery Funding Board. Arden Thomas with Snohomish County SWM developed the grant proposal.

Beach Expos

The following dates have Beach Expos planned:

July 25th- Mukilteo- Lincoln and Mary are leads.

August 22- Kayak Point- Tom, Dawn, Brent and Keeley are leads.

Mussel Watch Collection

August 17th. Alan Gave a presentation to Edmonds Community College, which appeared to be very successful and inspired students to volunteer. Amy Johnson is taking a lead role in the Mussel Watch program for this summer's sampling.

Washington Conservation Corps - Individual Placement (WCC IP)

Ecology plans to send out a notice within the next week to begin recruiting for our next WCC IP that will begin in October. Stef submitted a request to the County Administrators to hire an intern to help coordinate the Mussel Watch Program and Picnic Point project.

MRC Reauthorization- SCC2.800

Tomorrow I will receive approval from our prosecuting attorney on the final legislation language recommended by staff to reauthorize legislation. The PA would not approve the MRC's request to change the language from "The county executive may provide staff support to the committee to the extent that the executive deems appropriate." To "The county executive shall provide staff support to the committee." The paperwork will be submitted to the Executive within a few days and hopefully approved by Council in August. The reauthorization language increases the number of MRC members to 13. The Council still has the ability to amend the language upon their review, so it's possible this exact language could change before reauthorization.

Food Sign-up Sheet

Stef passed around a food sign-up sheet for September, October and December (no meeting in November). The County is no longer covering food expenses for this meeting due to funding cutbacks. Stef thanked Dena, Mary and Jerry for supplying the food and drinks up to this point in time. The following people signed up for the following:

- Sept 16- Keeley (food), Jared (drinks), Tom (plates/cups)
- Oct 21- Chrys (food), Brent (drinks), Tom (plates/cups)
- December 16- Mary (food), Dena (drinks), Tom (plates/cups)

Derelict Gear Removal- Puget Sound

DG 4.6 million in economic stimulus bonds through NWSF. NWSF set up office yesterday in Bellingham, and a Project Manager, intend to pull 3K nets that they've already mapped over the next 18 months. The program has received lots of media coverage. CNN will be on boat next week. This is just for net removal, not crab pot removal. NWSF is still going to try and find funding for crab pot removal project. Joan Drinkwin at NWSF will do all the permitting.

6:40 Public Comment

6:45 Introduction of Caroline Gibson, NWSC Marine Program Manager

Stef introduced, Caroline Gibson, NWSC's new Marine Program Manager. Caroline comes to the Commission serving on the Jefferson MRC for the past 4 years and San Juan MRC prior to that. Her charge from the Commission is to help the MRCs. Ultimately she will probably be alternating months, and to hear where there are sticky points, to assist where needed, etc. She will be staying on Olympic Peninsula and trying to strengthen Jefferson and Clallam MRCs connection to NWSC. She's excited and loving the job.

6:55 MRC Administration Update- Stef Frenzl

Surface Water Management's (SWM) Acting Director has given approval to start the process to fill the MRC Steward position. SWM's intent is to advertise externally to obtain the largest pool of candidates.

SWM's hope is to have the new MRC Lead Staff on board by September 14th or 21st, 2009.

Jared Bond and Mary Cunningham expressed an interest in participating in the interview process.

7:05 MRC August Potluck- Tom Hoban

Tom is taking the lead on coordinating the MRC Potluck. MRC members recommended including Island County MRC and local and federal elected officials. The Potluck will be held on August 18, 2009.

7:15 Kayak Point Update- Stef Frenzl

The Kayak Point Design Work is approximately 30% complete, and we need more funding to continue this project to get the project to a "shovel ready" state. Two months ago the MRC approved an application to the NWSC Benchmark Fund for the Kayak Point project. MRC Staff developed a proposal asking for \$104,800, which is what staff estimated to enable the project to be "shovel ready." The proposal included:

- Completing design
- Bid plans and specifications
- Monitoring
- Outreach/public meetings
- Permit acquisition

Kayak Point was awarded \$65,000 from the NWSC Benchmark Account. However, this amount is conditional. The funding is pending the County's formal response to NWSC's condition that the lead staff must be hired as soon as possible, and requested a formal response from the County by July 20th with an explanation of when they plan to fill the position. They want to ensure we can spend the funds by the June 2010 deadline. However, NWSC is also considering funding the project with a different source than the Benchmark Fund to cover the remaining amount of the grant that we just completed and didn't fully spend (which is close to the same amount- approximately \$60,000). Staff is waiting to hear from NWSC on how they'd like to proceed.

- MRC Staff is moving forward with Parks to decide how to revise the budget to determine how to spend the \$60,000 or \$65,000. Keeley and Jerry offered to assist with the budget revisions.
- Before I ask for names for people interested, are there any questions?

7:35 Port Susan MSA Resolution- Chrys Bertolotto

Last month draft resolution proposed. Mike and Kit have developed some comments on how the resolution needs to be changed. The committee hasn't received the revised resolution yet. Based on Chrys' conversations with Mike McHugh, Mike has put some time into looking at the resolution and identifying the Tribes' potential issues.

7:45 Update from NWSC- Tom Hoban

Tom brought a copy of minutes. Log into hearing with NOAA on the reauthorization with NWSC. Maria Cantwell asked the new director of NOAA about NWSC.

Whatcom MRC just completed a 10 year report. The report cost them \$6,000 to develop the report.

The NWSC MRC Conference will be held on Nov 6-7th in Bellingham. The new Director of NOAA is keynote speaker. She's from Corvallis, OR. They're putting together a draft agenda. If there are specific requests at workshops so Jerry can represent it at the meeting.

President Obama has appointed a task force on Ocean Policy.

8:25 Mussel Watch Update- Lincoln Loehr

The MRC had a past MRC member Alan Mearns help get this project going for the MRC. NOAA is a national project. We have a report that summarized what we've done so far, and Mary, Alan, Lincoln and Mike Tillotson helped to draft the report.

Lincoln showed a PowerPoint presentation, highlighting the status of pollutants in Edmonds. Alan Mearns presented to Backyard Wildlife Program and Edmonds LEAF. The presentation gave a brief overview of the reason for using blue mussels, overall national program data for PAHs, and included a map of Snohomish County Mussel Watch sites. Chemicals- trace elements, organotin compounds, PAHs, PCBs, organochlorine pesticides, current use pesticides, chlorinated benzenes, PBDEs, lipid and water content.

The presentation also showed results for mercury at multiple sites in Puget Sound. Cadmium- highest along the West Coast, likely due to natural occurrences in upwelling. Copper- not much variation in Puget Sound (between 8 and 20 PPM DW).

Lead- Edmonds is #1, Mukilteo #2, and Possession Point low, so the high areas are localized (between 1-3 PPM)

PAHs- 2006- Port Townsend had highest numbers. Total PAH national trend coming down quite a bit. SnoCo sites- Wet season by Dry Season. These data tell us that perhaps Puget Sound is artificially high and other areas are artificially low when comparing data sets. Wet Season Values are higher than dry season values.

PCBs- Edmonds is higher than Mukilteo. Wet season are higher than dry season values as well.

PBDEs- Edmonds has the highest value in the west coast.

PAHs- more combustion is occurring in south SnoCo.

The future- stormwater runoff appears to be important

Lincoln then discussed the Mussel Watch Report. Lincoln updated the report this July and created a corrections page.

Jerry asked about plans to share data. Mary said that we're still getting data, but we do have plans and a requirement in our grant to give more presentations to elected officials, etc. We're adding two more sites: one in Tulalip (Hermosa Point) and one either in north or Edmonds and Mukilteo. Chrys recommended that the Community In Action group coordinate with the water quality subcommittee to ensure that we develop coordinated messages.

Lincoln stated that NOAA is willing to allow volunteers to sample during NOAA sample times and in turn for the cost savings, NOAA would fund more lab analysis to get more additional samples in other stations.

John Houghton noted that Washington Dept of Ecology just finished an extensive survey of Port Gardner and the MRC should see if those data correlate with Mussel Watch.

8:43 Adjourned

Snohomish County Marine Resources Advisory Committee (MRC)

Meeting Summary

Wednesday, September 16, 2009, 6:30 – 8:30 p.m.
Snohomish County East Administration Building
Public Hearing Room, East
3000 Rockefeller Ave, Everett, WA 98201

MRC Members Present

Chrys Bertolotto
Brent Hackney
Thomas Hoban
Lincoln Loehr
Jerry Masters
Mike McHugh
Keeley O'Connell
Mary Cunningham
Jared Bond

MRC Members Absent

Dena Peel (Excused)
Dawn Lawrence (Excused)
Jen Sevigny

Staff, Presenters and Others

Jessica Anderson, SnoCo- PW – SWM Staff
Heather McCartney, City of Mukilteo

Summary of Decisions

- MRC Meeting summary for the June 2009 meeting was tabled to be reviewed at October 2009 meeting in concurrence with summaries for July and Sept 2009

Upcoming Events

Blue Festival

- October 3 – Blue Festival 10:00 am to 7:00 pm Maritime Events Center, Pier 66, Seattle
This event celebrates wild and healthy oceans with a film festival, panel presentations, musicians, interactive marine exhibits and nautical vendors and information booths.

MRC Conference

- Nov 6-7, 2009 – NWSC Annual MRC Conference – Bellingham, WA

**Snohomish County Marine Resources Advisory Committee
Meeting Summary, Wednesday, September 16, 2009, 6:30 – 8:30 p.m.**

Welcome, Introductions, and Announcements

WSU Beach Watcher Program

Chris Bertolotto gave a handout for a recruiting effort for the WSU Beach Watcher Training Program. The WSU Beach Watcher Training Program will be March 23-May 6, 2010.

MRC Administration Update

MRC Reauthorization

The MRC has been reauthorized for another 5 years. Since MRC staff began the reauthorization process, staff learned about another issue with the County Code language related to the MRC's authority and the NWSC Grants. NWSC has been writing in our grants that "The MRC shall conduct the work," when the County Code formally doesn't authorize the MRC to conduct work. Previously, our attorneys have let this language go; however, our attorney reviewing the grant this time will not approve as to form unless we find a solution to meet our needs. NWSC has been hesitant to change this language because they want to make sure they have documentation on their end that the MRCs are involved in the work. From the County's perspective, the county will likely have difficulty authorizing volunteers to be responsible for grant deliverables without staff being included in the contract in some capacity. So, we plan to review the MRC ordinance and amend the existing language after Council finishes its county budget approval process. Council also wants to remove the sunset clause, so the MRC will become a permanent body. We plan to begin this process once the new Marine Steward is established in late October.

NWSC Grant Status-

We have been awarded \$65,000 from the Northwest Straits Benchmark Account to complete the Kayak Point Project's design. NWSC is integrating this funding into our existing NWSC 2-Year Grant to simplify the process for everyone. However, we have run into a couple snags with the contract at our PA's office. Staff and NWSC are working to find solutions that will work for everyone's needs, and will give updates to the Executive Committee to let you all know what the grant contract's status. The contract enables us to backdate our work starting in July 1, 2009; however, we are hesitant to enter into any additional contracts such as continuing with Coastal Geologic Services for the Kayak Point nearshore design work until we know the grant will be approved.

Conference Preparations

The NWSC's MRC Annual Conference will be held in Bellingham, WA on November 6-7th. All MRC Members should have received a conference invitation directly from Connie Price at NWSC. If you did not receive the invitation from Connie, please let me know immediately and we'll make sure she sends you the conference registration website link right away.

NWSC will directly cover conference registration fees and meals for Friday night, Saturday morning and Saturday afternoon. The NWSC grant will cover your travel and one night's lodging expenses via reimbursement. Please save all your original receipts, as we will need originals to process your reimbursement requests. Also, to minimize travel expenditures to our grant, we will coordinate a vanpool for those interested in leaving Everett on Friday morning and leaving Bellingham after the conference on Saturday afternoon. I'm passing around a sign-up sheet for anyone interested. If you plan to stay an extra night, please consider carpooling with another MRC member!

The cutoff date to receive the discounted \$70 room rate is on October 6th, so please don't hesitate. The county will only reimburse you for the discounted room fee.

We'll have time to further discuss the conference at the October MRC meeting.

MRC Conference Agenda Highlights:

Friday November 6 sessions include:

- Communications workshop designed for MRCs, Commission members, and all staff
- Field trip of the Bellingham waterfront project
- Climate change (with renowned NOAA scientist Dr. Richard Feely)
- Evolution of the Northwest Straits Initiative

Saturday November 7 sessions include:

- Rockfish of the region: conservation and management strategies and the MRCs
- A tribal perspective on the health of the region
- Change analysis of Puget Sound shorelines
- How to write a great Opinion Editorial
- Native oyster restoration: the landscape and the opportunities
- Developing regional projects

Marine Steward Position

Jerry Masters Stated that the County was finishing up the process of candidate selection, and Human Resource required hiring processes. A decision on the hired candidate should be announced soon.

Public Comment

No public comment

Puget Sound Partnership Update

Morgan Schneider was unable to attend this meeting and is scheduled to present updates at the October MRC Meeting. Jerry Masters addressed the recommendations for Science Panel. Discussion regarding MRC providing a recommendation for Alan Mearns.

Shore Stewards Update

Chrys Bertolotto explained that Shore Stewards were not Sound Stewards. Shore Stewards Consist of shoreline property owners. Shore Stewards expands across 10-11 counties with 275 Stewards in Snohomish County made up of 207 different households. The Shore

Stewards program provides information on solutions to keep Puget Sound healthy. They have plans to hold 3 workshops for residences by June 2010. Chrys also stated that the MRC was recognized for its support of the Shore Stewards program by not only mentioning the MRC in their printed outreach materials, but also the MRC logo was present on their outreach material as well.

Marine Protected Area State Working Group Update

Heather McCartney, Planning Director for City of Mukilteo, who was asked by the MRC to represent them in a work group to address recommendations on how to improve future use of Marine Protected Areas (MPA) to the Washington State Legislature, presented a summery update. The work group over saw the completion of an inventory of Washington's MPAs. There are 127 MPA in Puget Sound containing 6 million feet of shoreline. The work group has drafted a recommendations document that is due September 30, 2009. In this report, the work group summarizes the evaluation of the MPA inventory, discusses significant findings, and provides recommendations developed based on this inventory. In Heather requested the MRC review the 40 recommendations (found on pages 13-25 of the document) made by the MPA Work Group and comment back to her prior to September 30, 2009. The document is in draft phase. The second draft will be delivered October 13, 2009 with the Final document presented October 30, 2009. The document will not go out for public comment until final stage.

Port Susan MSA

Chrys Bertolotto and Mike McHugh have been working towards a final draft language for a draft resolution. Mike is working with the Tribes to include language that supports the Tribe's objectives. Lincoln Loehr discussed the inclusion of water quality language into the resolution. Mike will e-mail the final draft to MRC members for comment.

Crabber Education Update

Brent Hackney discussed the high number of pots being lost, and the strive to get education outreach material updated by 2010. Sponsors are being sought to help sponsor rot cord flyers. There is focus to education crabbers about the Reporting Hotline. The outreach goal is to reach 1500 crabber per season. The education group is also focusing on ways to get easier reporting methods of lost pots.

Mussel Watch Update

Marry Cunningham discussed the efforts of the last mussel collection. She briefed the group on the two new sites which were Hermosa Point, just off Tulalip Bay and the Cemex Site in Everett. The next mussel watch will be scheduled for February or March of 2010.

Adjourn

Jerry Masters adjourned the meeting at 8:25 p.m.

Snohomish County Marine Resources Advisory Committee (MRC)

Meeting Summary

Wednesday, October 21, 2009, 6:30 – 8:30 p.m.
Snohomish County East Administration Building
3000 Rockefeller Ave, Everett WA 98201
1st Floor, Public Hearing Room 2

<p><i>MRC Members Present</i> Jared Bond Mary Cunningham Brent Hackney Thomas Hoban Dawn Lawrence Lincoln Loehr Jerry Masters Mike McHugh Keeley O’Connell Dena Peel</p> <p><i>MRC Members Absent</i> Chrys Bertolotto, Excused Jen Sevigny, Excused</p>	<p>Staff, Presenters and Others Kathleen Herrmann, Snohomish County SWM Andrea Hennings, Snohomish County SWM, WCC IP Stef Frenzl, Snohomish County SWM Amy Johnson, Edmonds Community College Mike Tillotson, Citizen Kerry Marl, Pilchuck Audubon Jon Houghton, Edmonds Morgan Schneider, Puget Sound Partnership Caroline Gibson, Northwest Straits Commission</p>
<p style="text-align: center;">Summary of Decisions</p> <ul style="list-style-type: none">• The MRC meeting summary for July and September 2009 were approved following Jared Bond’s attendance correction to present and a typo on page 2 of the September minutes.• The Port Susan Marine Stewardship Area Resolution was approved pending any comments or changes due by Friday, October 30, 2009.	
<p style="text-align: center;">Upcoming Events</p> <p>MRC Conference</p> <ul style="list-style-type: none">• Nov 6-7, 2009 – NWSC Annual MRC Conference – Bellingham, WA <p>Kayak Point Regional Park Visioning Workshop</p> <ul style="list-style-type: none">• Nov 18, 2009- Kayak Point Golf Course, 6:30-8:30 pm, 15711 Marine Drive NE, Stanwood	

**Snohomish County Marine Resources Advisory Committee
Meeting Summary, Wednesday, October 21, 2009, 6:30 – 8:30 p.m.**

Welcome, Introductions, and Announcements

Lund's Gulch Basin

Jared Bond announced his attendance at a City of Lynnwood meeting, where a topic included Lund's Gulch Basin. The city is looking to create a 1-2 year plan to specifically meet the needs of the area.

Puget Sound Starts Here

Stef Frenzl announced the beginning of the "Puget Sound Starts Here" Campaign, which is a partnership between 57 local cities and counties (STORM- Stormwater Outreach for Regional Municipalities), Washington State Puget Sound Partnership, and Washington State Department of Ecology. This partnership was formed to highlight and improve water quality in Puget Sound and its surrounding lakes, rivers and streams.

EcoNet Bus Proposal

EcoNet is looking to develop bus ads that will run for over a year and will be funded by the Department of Ecology and Puget Sound Partnership, with each contributing \$500,000. Further funding will hopefully be provided by a GROSS grant.

Hedrick Smith Lecture

Kathleen announced the Hedrick Smith lecture on November 3, 2009 at the University of Washington (Kane Hall, Room 130 at 6:30 p.m.).

City of Mukilteo Mayor Debates

Jerry attended the City of Mukilteo mayor debate on September 22, 2009 at Kamiak High School, where he asked about potential beach access, as well funding sources to move the fencing.

Public Comment

Friends of the Edmonds Marsh

Jon Houghton noted the development of the "Friends of the Edmonds Marsh," a group which currently has meetings to promote the health of the 24 acre Edmonds Marsh. The marsh provides a unique resource and valuable habitat. The removal of a culvert could expand the area to restore an existing pocket estuary. The group has established goals and objectives, but would like to find partners and funds for a feasibility study, which he suggested may be a good MRC project. People for Puget Sound could also be a local partner for potential funding. Two creeks are present in the southern portion of the marsh area, which run under the railroad, parking lot, and marina through twin pipes that subsequently open off shore. Some adult Coho salmon have been able to find the culvert, although they are likely of hatchery stock. A new drainage project should be considered; significant backups have occurred in the past with the last backup occurring in 1996. These types of events could provide local community buy in for a project.

NWSC Conference and Reauthorization update

Caroline Gibson announced the upcoming Northwest Straits Commission Conference on November 6 & 7, 2009 and indicated that there was still time to register.

Reauthorization proceedings took place on October 22, 2009 in Washington, DC, with Ginny Broadhurst speaking before the Reauthorization committee. There were 12 pages of written testimony, including a letter from Snohomish County Executive Aaron Reardon, and 5 pages of spoken testimony. An update for the outcome of these proceedings will be heard soon.

MRC Administration Updates

Formal Introduction of Kathleen Herrmann and Andrea Hennings

New MRC Contact Info Sheets

New contact sheets were handed out. Dawn noted that Jared Bond and Dena Peel were the new co-vice chairs and the title should be removed from her name.

NWSC Grant Contract

The Northwest Straits Commission grant contract for \$305,000 for 2009-2011 has not been signed yet as the county was rearranging funding for the Marine Steward position. The NWSC has now given money specifically for administration, with the SWM money going toward projects. The contract will be finalized after a resolution from the Council in December 2009 once they sign the budget. This will not affect how the money is spent out of the grant and should be approved by our attorney this week.

MRC Reauthorization Amendment

An amendment was proposed to review the roles and responsibilities of the MRC, as well as remove the sunset clause. The Council's office was the proponent of the amendment, and Brian Goodnight and the Prosecuting Attorney's office will begin working on the changes this month.

MRC Bylaws

The MRC Bylaws will need to be renewed in January. Recommendations on amendments need to be coordinated over the next few months. Jerry, Jared, and Dena were recommended to assist Kathleen complete this task.

MRC Elections

It is time to begin thinking about officer positions for next year. Kathleen will work with existing officers to determine how to proceed. If you're interested in serving as an officer, please let Jerry or Kathleen know.

MRC meetings for November and December.

All MRC members are invited to a visioning workshop for the Kayak Point project on November 18th at Kayak Point Golf Course instead of a formal meeting. More details to follow. Stef suggested a holiday party instead of a meeting in December. Lincoln and Jerry suggested Mussel Watch sampling or a potential activity with the public.

Mussel Watch

The Puget Sound Partnership is considering contributing funding to help develop a volunteer-based effort to collect mussels for the Mussel Watch program statewide. Snohomish County and the MRC have been a leader in the program and are working with a project team to determine how we can help train other counties to continue the citizen science model throughout the state. This project is a collaboration with Puget Sound Partnership, Washington Department of Fish and Wildlife, WA Sea Grant, and NOAA.

NWSC Update

Tom Hoban attended the NWSC meeting in Friday Harbor. In the future, notes and links will be sent out to meeting participants. People for Puget Sound also send out a daily news update on local marine conservation issues.

David Dicks proposed a new regulation for vessels visiting Puget Sound to control invasive species. The Leque Island restoration project in Snohomish County was discussed. Stef added that the Snohomish County Council takes part in permitting for the project, so MRC input could be important, especially with pressure from the Agriculture Advisory Board. He also wondered if anyone would be interested in drafting a letter of support in case it is needed. Stef will send out information so the MRC can move on any decisions in the future.

NWSC Conference Preparations

Logistics for conference participants was discussed.

Puget Sound Partnership Update & Introduction of Morgan Schneider

Morgan Schneider, the Ecosystem Recovery Coordinator for the Whidbey Action Area, announced that she was looking for help to implement the action agenda. The Puget Sound Starts Here campaign and other activities are taking place, and she is hoping to begin conversations with other local groups to prioritize work.

Port Susan MSA

Mike McHugh submitted the Port Susan MSA draft to the MRC. Jerry asked whether anything that was discussed at the meeting would have to go through the county council, and if everyone was generally in favor, if the MRC could go ahead and approve the Port Susan MSA designation. It was noted that the resolution would need to come from the county's prosecuting attorney before the tribes would approve the designation, at which time it could go to the council. "Snohomish" and "Advisory" committee were to be added to "Snohomish County Marine Resources Advisory Committee," with additional comments and changes to be made by email before the draft is sent to the county attorney. Dawn motioned for the resolution's approval, which passed unanimously.

Kayak Point Update

Stef will still be the lead on this project for the next few months to continue momentum; duties will transfer to Kathleen at a later point. He discussed the background of the project, including the 2006-2007 storms, the resulting damage to the road, and how sea level rise would affect the park, road, and bulkhead in the future. The restoration design is currently at 30% and includes

options on road redesign.

The purpose of the workshop on November 18, 2009 is to obtain feedback from the public on their past and current use of the park. People for Puget Sound have secured a facilitator for the meeting, and they have obtained funding for outreach and canvassers to contact the local community and previous park users. This workshop is the first to two planned workshops to engage the public in their desired uses and vision for the park, with the second meeting taking place in the spring of 2010 to review design options. Completion of a 100% design is expected by June 2010.

Crabber Education Update

Brent Hackney gave an update on the progress of the new outreach materials for the crabber education program. These materials will include a 2-sided, weatherproof map with Port Susan on one side and Port Gardner on the other. Initial ideas for information on the map include shipping lanes, mooring buoy for barges, log booms, regatta dates, and contour lines of the bathymetry in feet. Snohomish County GIS will likely put the map together, and they will be placed in stores for distribution next to crab pot displays. Dan Hatch is willing to put up a display in his store.

Brent has also created a simple poster design for this year, which he will send out for approval. Distribution will take place at marinas on busy days along with escape cord cards. The feasibility of a website is being considered.

Mike commented that the Washington Department of Fish and Wildlife (WDFW) sport pamphlet is updated every October, and that the Tulalip tribe has proposed a better picture of a crab pot setup be included within the Dungeness crab regulations. As WDFW is responsible for updating pamphlets, it may be good for the MRC to formally comment on the crabbing portion, which should be directed to Rich Childers. Mike will email the Tulalip picture to the MRC.

Presentation: Puget Sound Processes 101- Lincoln Loehr

Lincoln recommended that he move his presentation to another date in the interest of time. Lincoln is currently examining a study conducted by Department of Ecology about rainfall and chemical loads from runoff from five area rivers, including the Stillaguamish and Snohomish Rivers. Sampling for the study took place in June and September, with a December sampling to take place. These dates mesh with the Mussel watch dates and stations, and the sampling tested for chemicals like PDBE's. Lincoln will send out an email with more information to Kathleen and Stef.

Jerry adjourned at 8:45.