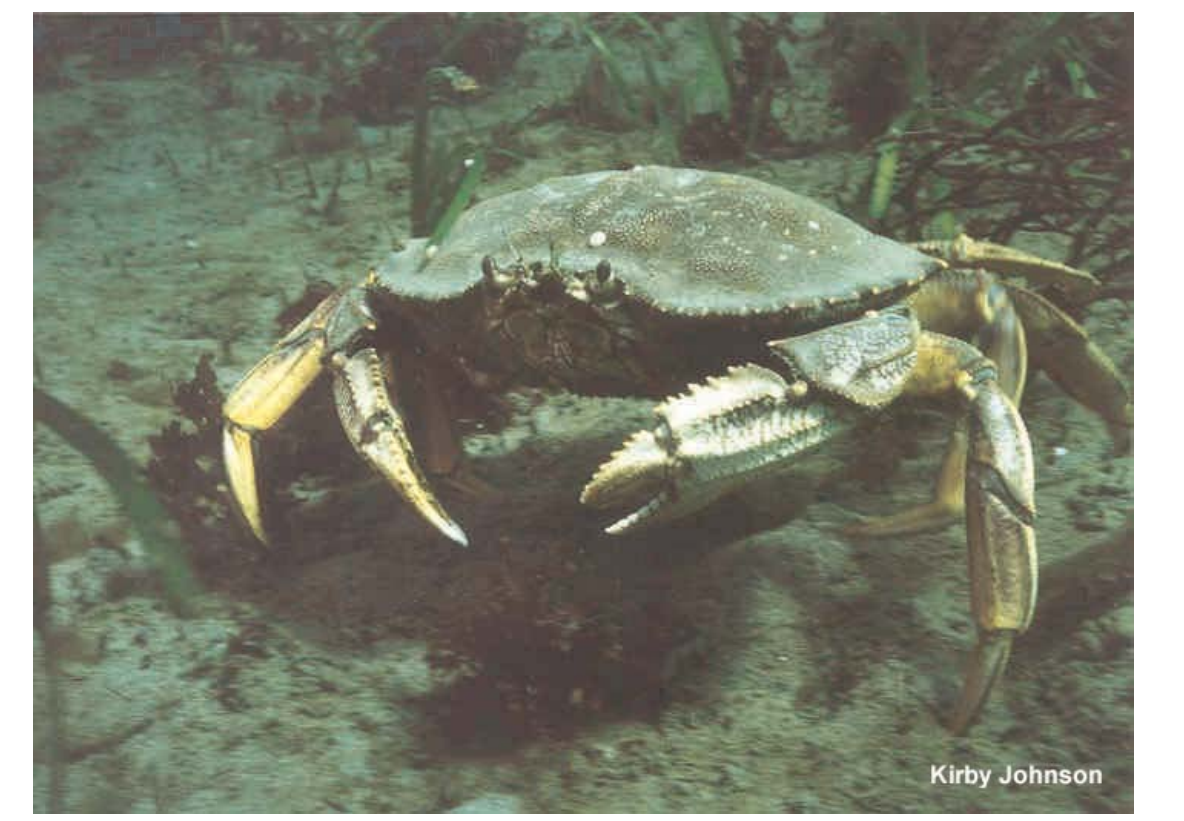


Dungeness Crab Distribution & Recreational Harvest

Marine Shoreline of Snohomish County

Legend

-  County Boundary
-  Major Roads
-  Railroads
-  Streams
-  WRIA Boundary
-  City Boundary
-  Dungeness Crab
-  Incorporated Areas
-  Parks
-  Recreational Crab Bouy



Adult Dungeness crab in eelgrass



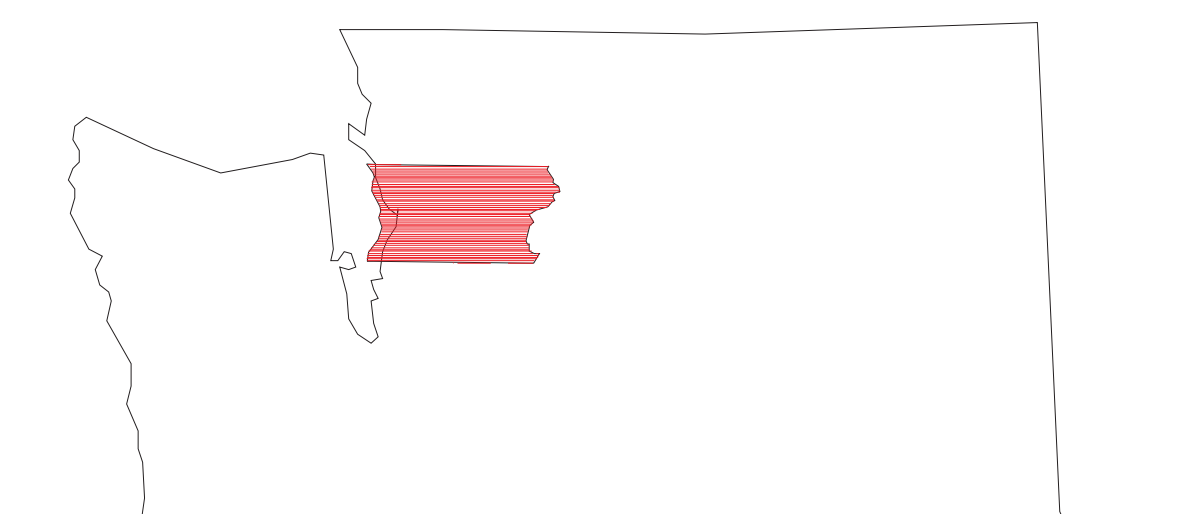
Commercial crab fishing boat



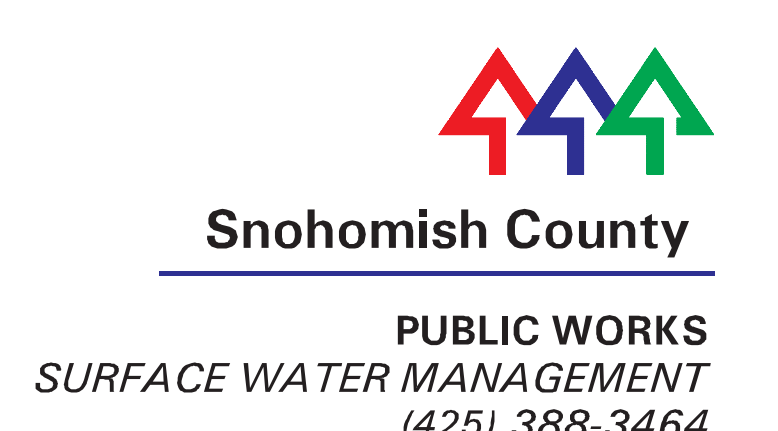
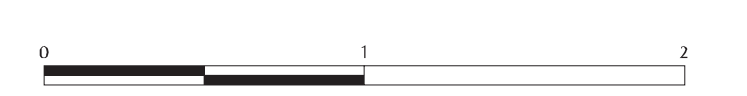
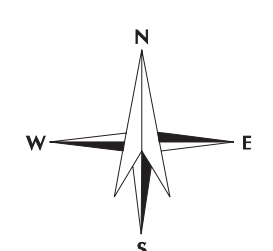
Local retail sale of Dungeness crab

Dungeness Crab Info.

- * Dungeness crab is an important local economic resource. From 1996 to 2001, the average annual commercial and tribal Dungeness crab harvest in Snohomish County was about 520,000 pounds, which had a wholesale value of about \$1 million/yr.
- * Eelgrass beds and shallow marine waters with sandy or muddy bottoms, including estuaries, are critical to Dungeness crab reproduction and growth.
- * Clams, fish, worms, squid, snails, and smaller crab are important food sources for Dungeness crab.
- * The Puget Sound Dungeness crab fishery is co-managed by the State of Washington and the tribes.



Snohomish County, Washington



Snohomish County disclaims any warranty of merchantability or warranty of fitness of this map for any particular purpose, either express or implied. No representation is made concerning the accuracy, currency, completeness or quality of data included on this map. Any user of this map assumes all responsibility for use, storage, and further agrees to hold Snohomish County harmless from and against any damage, loss, or liability arising from any use of this map.
Map Projection: State Plane North, Zone 5601, NAD 83, Units Feet
Source: Snohomish County 1:24k County Boundary, Roads, Parks, Hydro, Trails
Footcades from 10m DEM, DNR 1:24k Hydrography (poly)
Dungeness crab data from Washington Department of Fish & Wildlife
File path: \\sno\gis\workspace\templates\crab_0812

