



Kelp Bed Measurements

EDM 1

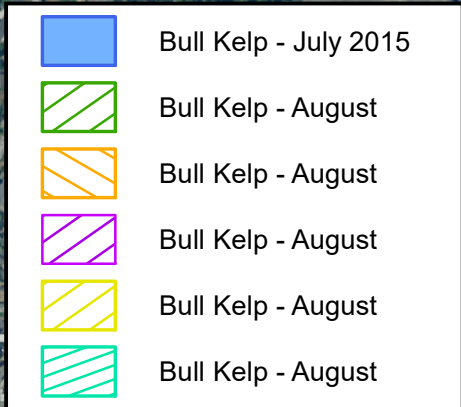
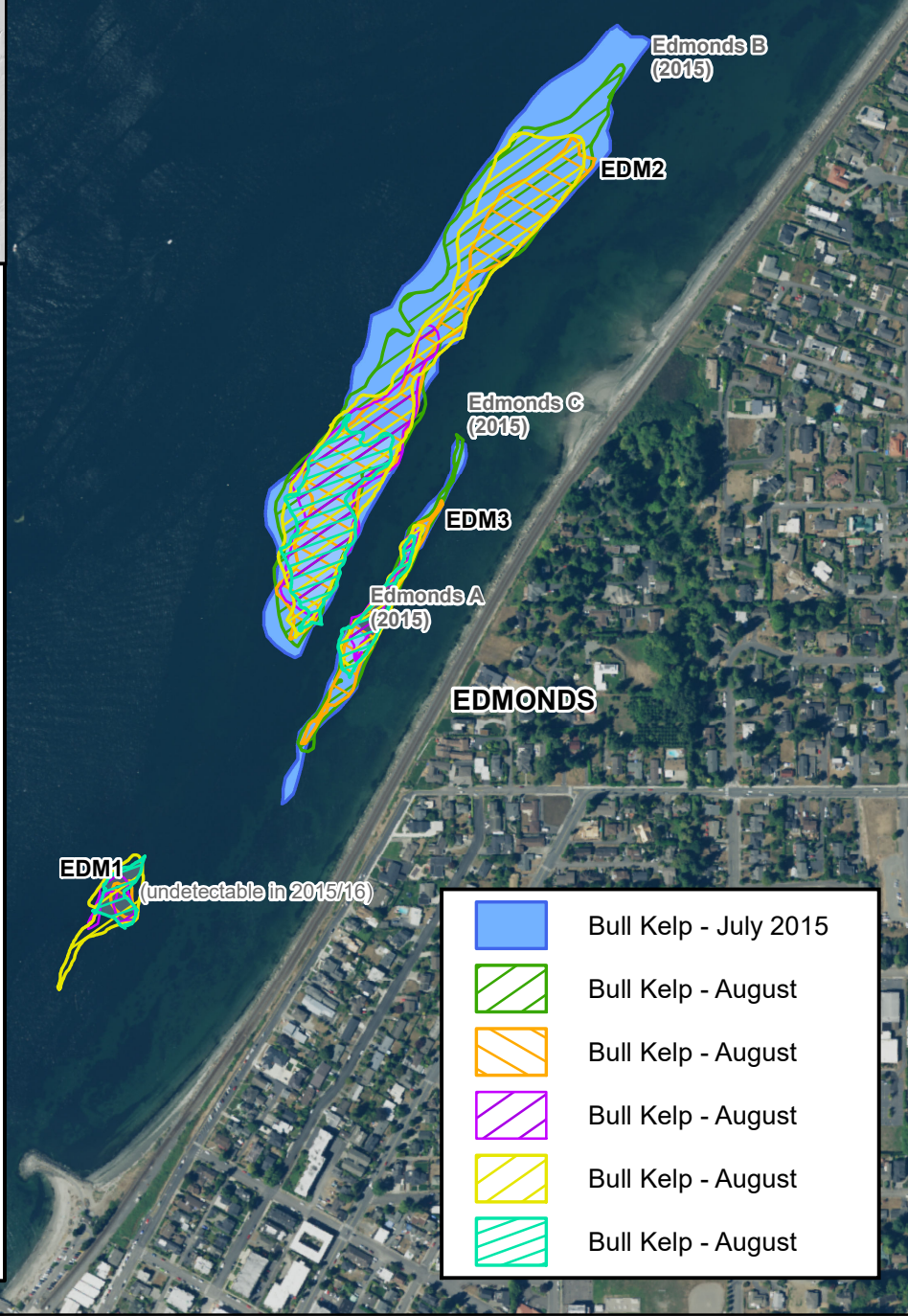
- July 2015: undetectable
- August 2016: undetectable
- August 2017: 0.20 acres
- August 2018: 0.31 acres
- August 2019: 0.94 acres
- August 2020: 0.48 acers

EDM 2 (Edmonds B)

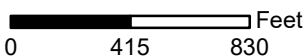
- July 2015: 15.14 acres
- August 2016: 11.36 acres
- August 2017: 6.20 acres
- August 2018: 4.39 acres
- August 2019: 8.75 acres
- August 2020: 3.08 acers

EDM3 (Edmonds A & C)

- July 2015: 1.71 acres (A + C)
- August 2016: 1.48 acres
- August 2017: 1.03 acres
- August 2018: 0.41 acres
- August 2019: 0.80 acres
- August 2020: 0.70 acres



Imagery Source: NAIP 2015, GPS's had an accuracy of +/- 10 ft during our monitoring



Comparison of Observed Bull Kelp, Low Tide, Edmonds, Snohomish County, 2015-2020

All maps, data, and information set forth herein ("Data"), are for illustrative purposes only and are not to be considered an official citation to, or representation of, the Snohomish County Code. Amendments and updates to the Data, together with other applicable County Code provisions, may apply which are not depicted herein. Snohomish County makes no representation or warranty concerning the content, accuracy, currency, completeness or quality of the Data contained herein and expressly disclaims any warranty of merchantability or fitness for any particular purpose. All persons accessing or otherwise using this Data assume all responsibility for use thereof and agree to hold Snohomish County harmless from and against any damages, loss, claim or liability arising out of any error, defect or omission contained within said Data. Washington State Law, Ch. 42.56 RCW, prohibits state and local agencies from providing access to lists of individuals intended for use for commercial purposes and, thus, no commercial use may be made of any Data comprising lists of individuals contained herein.



Snohomish County

PUBLIC WORKS
SURFACE WATER MANAGEMENT
(425) 388-3464



Snohomish County
Marine Resources
Committee