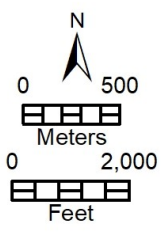


Snohomish River

I-5

WA 529

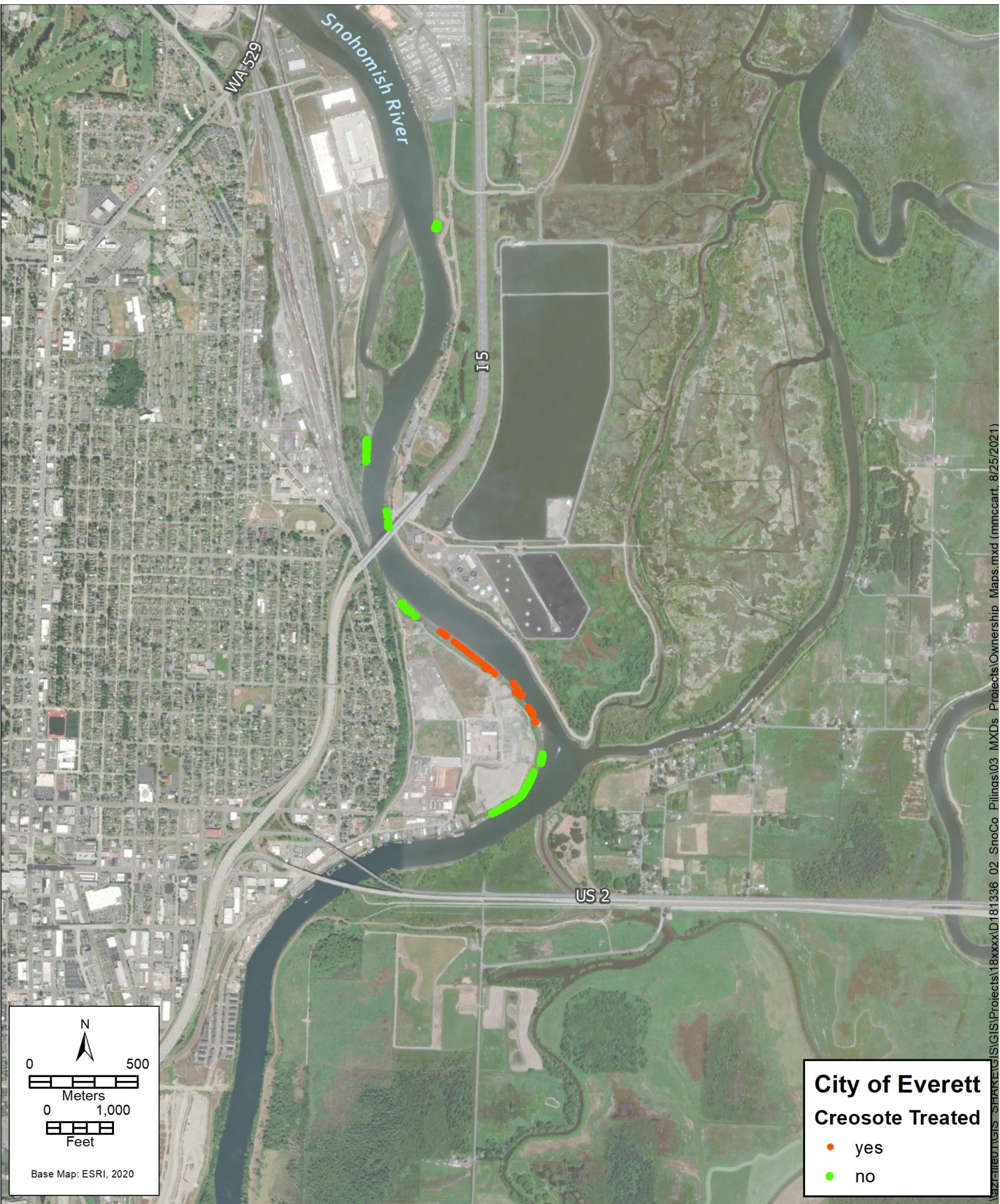
US 2



Base Map: ESRI, 2020

**State Owned
Creosote Treated**

- yes
- no







Snohomish River

WA 529

I 5

US 2

N

0 500

Meters

0 2,000

Feet

Base Map: ESRI, 2020

Port of Everett

Creosote Treated

- yes
- no



WA 529

Snohomish River

I 5

US 2

Snohomish County
Creosote Treated

- no

N

0 500

Meters

0 2,000

Feet

Base Map: ESRI, 2020

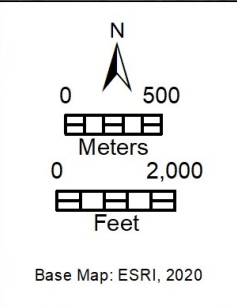


Snohomish River

I 5

WA 529

US 2



Tulalip Tribe
Creosote Treated

- orange dot = yes
- green dot = no